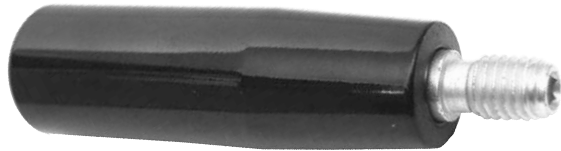


REVOLVING HANDLES

BODY: BLACK PHENOLIC PLASTIC OR NYLON THERMOPLASTIC
 THREADED SPINDLE: MILD STEEL, ZINC PLATED CLEAR CHROMATE

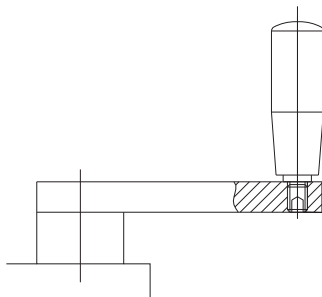


**Phenolic
with Steel Body**

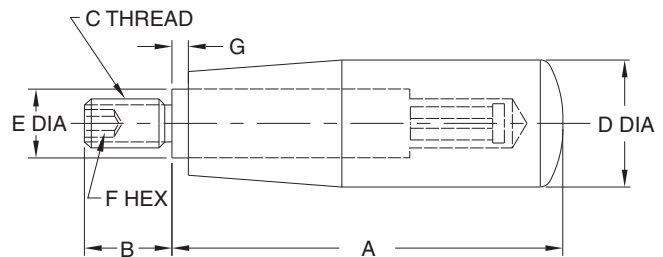


**Thermoplastic
with Steel Body**

Modern square-design handle with a threaded steel spindle. Revolving Handles have an internal bearing that allows the handle to remain fixed in your hand, for firm gripping while turning a Hand Wheel or crank. Threaded spindle has a hex socket for easy installation. Available in two handle materials: Black phenolic plastic (glossy smooth finish, extremely hard, electrical insulator, operating temperatures to 300°F, resistant to oils and most common chemicals) or matte black nylon thermoplastic (textured surface for secure gripping, excellent impact resistance, operating temperatures to 230°F).



Revolving Handles can be used to make custom crank handles.



INCH

| PART NO. PHENOLIC | PART NO. THERMOPLASTIC | SIZE | A | B | C | D DIA | E DIA | F | G |
|-------------------|------------------------|------|------|-----|---------|-------|-------|-----|-----|
| CL-100-RH-F | CL-100-RH-P | 1 | 1.67 | .47 | 1/4-20 | .71 | .39 | 3mm | .10 |
| CL-200-RH-F | CL-200-RH-P | 2 | 2.07 | .51 | | .83 | | | |
| CL-300-RH-F | CL-300-RH-P | 3 | 2.66 | .55 | 5/16-18 | .91 | 4mm | | |
| CL-400-RH-F | CL-400-RH-P | 4 | 3.25 | .63 | 3/8-16 | 1.02 | 5mm | | |
| CL-500-RH-F | — | 5 | 4.12 | .79 | 1/2-13 | 1.22 | 6mm | | |

METRIC

| PART NO. PHENOLIC | PART NO. THERMOPLASTIC | HANDLE SIZE | A (mm) | B (mm) | C THREAD | THREAD PITCH (mm) | D DIA (mm) | E DIA (mm) | F (mm) | G (mm) |
|-------------------|------------------------|-------------|--------|--------|----------|-------------------|------------|------------|--------|--------|
| CLM-100-RH-F | CLM-100-RH-P | SIZE 1 | 42.5 | 12 | M6 | 1 | 18 | 10 | 3 | 2.5 |
| CLM-200-RH-F | CLM-200-RH-P | SIZE 2 | 52.5 | 13 | M6 | 1 | 21 | 10 | 3 | 2.5 |
| CLM-201-RH-F | — | — | 52.5 | 13 | M8 | 1.25 | 21 | 10 | 4 | 2.5 |
| CLM-300-RH-F | CLM-300-RH-P | SIZE 3 | 67.5 | 14 | M8 | 1.25 | 23 | 13 | 4 | 2.5 |
| CLM-400-RH-F | CLM-400-RH-P | SIZE 4 | 82.5 | 15 | M10 | 1.5 | 26 | 13 | 5 | 2.5 |
| CLM-500-RH-F | — | SIZE 5 | 104.5 | 20 | M12 | 1.75 | 31 | 14 | 6 | 2.5 |