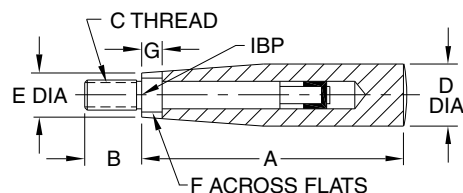


# REVOLVING HANDLES

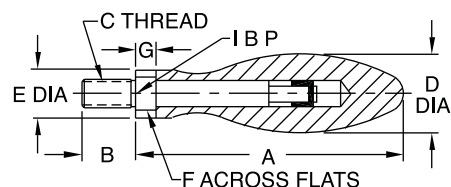
STEEL: 1215, BLACK OXIDE FINISH. STAINLESS STEEL: 300 SERIES



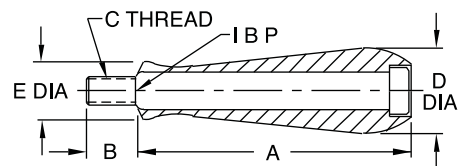
**Square Design  
Threaded  
Stainless Steel**



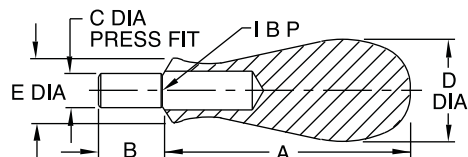
**Rounded Design  
Threaded  
Stainless Steel**



**Rounded Design  
Shoulder Screw  
Steel, Black Oxide Finish**



**Rounded Design  
Press Fit  
Steel, Black Oxide Finish**



Revolving Handles have an internal bearing that allows the handle to remain fixed in your hand, for firm gripping, while turning a hand wheel or crank. These attractive handles are available in steel with a black oxide finish, or stainless steel with a polished finish. Available in square or rounded designs, each in several sizes. Choice of threaded type or press-fit type (do not use press-fit handles on aluminum hand wheels).

## SQUARE DESIGN, THREADED — STAINLESS (INCH)

PART NO.	HANDLE SIZE	A	B	C	D DIA	E DIA	F	G
CL-100-RH-S	1	1-1/2	9/32	1/4-20	5/8	15/32	5/16	.20
CL-200-RH-S	2	2	1/2			7/16		.25
CL-300-RH-S	3	2-1/2	9/16	5/16-18	3/4	17/32	3/8	.28
CL-400-RH-S	4	3-1/4	5/8	3/8-16	7/8	5/8	7/16	.32

## ROUNDED DESIGN, THREADED — STAINLESS (INCH)

CL-250-RH-S	2	2-1/4	1/2	1/4-20	5/8	.44	5/16	.25
CL-350-RH-S	3	2-13/16	9/16	5/16-18	13/16	.53	3/8	.28
CL-450-RH-S	4	3-3/8	5/8	3/8-16	1	.63	7/16	.32
CL-550-RH-S	5	4	3/4	1/2-13	1-1/4	.75	5/8	.39

## ROUNDED DESIGN, SHOULDER SCREW — STEEL (INCH)

CL-1-RH	2	2	7/16	1/4-20	13/16	3/4	—	—
CL-2-RH	4	3-3/8	11/16	3/8-16	1-1/4	15/16	—	—
CL-3-RH	5	3-7/8	3/4	1/2-13	1-1/2	1-1/8	—	—

## ROUNDED DESIGN, PRESS FIT — STEEL (INCH)

CL-4-RH	2	2-3/8	19/32	5/16	15/16	5/8	—	—
---------	---	-------	-------	------	-------	-----	---	---

## SQUARE DESIGN, THREADED — STAINLESS (METRIC)

PART NO.	HANDLE SIZE	A (mm)	B (mm)	C THREAD	THREAD PITCH (mm)	D DIA (mm)	E DIA (mm)	F (mm)	G (mm)
CLM-100-RH-S	SIZE 1	38	7	M6	1	16	12	8	5
CLM-200-RH-S	SIZE 2	51	13	M6	1	16	12	8	6.5
CLM-300-RH-S	SIZE 3	64	14	M8	1.25	19	14	9.5	7
CLM-400-RH-S	SIZE 4	83	16	M10	1.5	22	16	11	8

## ROUNDED DESIGN, THREADED — STAINLESS (METRIC)

PART NO.	SIZE	A	B	C	D DIA	E DIA	F	G
CLM-250-RH-S	2	2-1/4	1/2	M6	5/8	.44	5/16	.25
CLM-350-RH-S	3	2-13/16	9/16	M8	13/16	.53	3/8	.28
CLM-450-RH-S	4	3-3/8	5/8	M10	1	.63	7/16	.32
CLM-550-RH-S	5	4	3/4	M12	1-1/4	.75	5/8	.39

## ROUNDED DESIGN, SHOULDER SCREW — STEEL (METRIC)

CLM-1-RH	2	2	7/16	M6	13/16	3/4	—	—
CLM-2-RH	4	3-1/4	9/16	M10	1-1/4	15/16	—	—
CLM-3-RH	5	3-7/8	3/4	M12	1-1/2	1-1/8	—	—