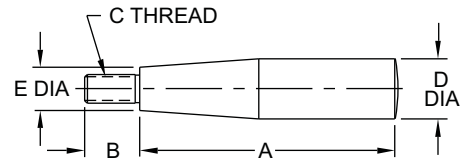


SOLID HANDLES

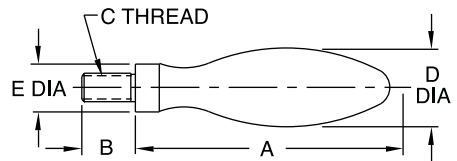
STEEL: 1215, BLACK OXIDE FINISH. STAINLESS STEEL: 300 SERIES.



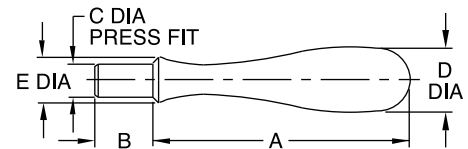
**Square Design
Threaded
Stainless Steel**



**Rounded Design
Threaded
Stainless Steel**



**Rounded Design
Press Fit
Steel, Black Oxide Finish**



SQUARE DESIGN, THREADED — STAINLESS (INCH)

PART NO.	SIZE	A	B	C	D DIA	E DIA
CL-100-SH-S	1	1-1/2	9/32	1/4-20	1/2	13/32
CL-200-SH-S	2	2	7/16			
CL-300-SH-S	3	2-1/2	9/16	5/16-18	5/8	15/32
CL-400-SH-S	4	3-1/4	11/16	3/8-16	3/4	19/32

ROUNDED DESIGN, THREADED — STAINLESS (INCH)

CL-250-SH-S	2	2	1/2	1/4-20	5/8	.44
CL-350-SH-S	3	2-5/8	9/16	5/16-18	13/16	.53
CL-450-SH-S	4	3-3/16	11/16	3/8-16	1	.63
CL-550-SH-S	5	3-3/4	13/16	1/2-13	1-1/4	.75

ROUNDED DESIGN, PRESS FIT — STEEL (INCH)

CL-1-SH	2	2	9/16	3/8	11/16	5/8
CL-2-SH	4	3-1/4	3/4	7/16	1	11/16
CL-3-SH	5	3-7/8	1	1/2	1-3/16	7/8

Attractive fixed handles available in steel with a black oxide finish, or stainless steel with a polished finish. Available in square or rounded designs, each in several sizes. Choice of threaded type or press-fit type (do not use press-fit handles on aluminum hand wheels).

SQUARE DESIGN, THREADED — STAINLESS (METRIC)

PART NO.	HANDLE SIZE	A (mm)	B (mm)	C THREAD	THREAD PITCH (mm)	D DIA (mm)	E DIA (mm)
CLM-100-SH-S	SIZE 1	38	7	M6	1	13	10
CLM-200-SH-S	SIZE 2	51	11	M6	1	13	10
CLM-300-SH-S	SIZE 3	64	14	M8	1.25	16	12
CLM-400-SH-S	SIZE 4	83	17	M10	1.5	19	15

ROUNDED DESIGN, THREADED — STAINLESS (METRIC)

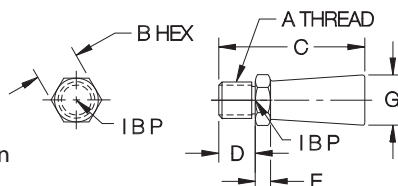
CLM-250-SH-S	SIZE 2	51	13	M6	1	16	10
CLM-350-SH-S	SIZE 3	67	14	M8	1.25	21	13
CLM-450-SH-S	SIZE 4	81	17	M10	1.5	25	16
CLM-550-SH-S	SIZE 5	95	21	M12	1.75	32	19

FINGER PINS

1215 STEEL, BLACK OXIDE FINISH



Miniature, fixed finger handle in steel, with a black oxide finish.



INCH

PART NO.	A	B	C	D	E	G DIA
CL-0-FP	#10-32	1/4	3/4	1/4	7/64	1/4
CL-1-FP	#10-24					
CL-2-FP	5/16-18	3/8	1-1/4	5/16	5/32	3/8

METRIC

CLM-5-FP	M5	6mm	.75	M6	.12	.24
CLM-8-FP	M8	10mm	1.26	M8	.16	.39