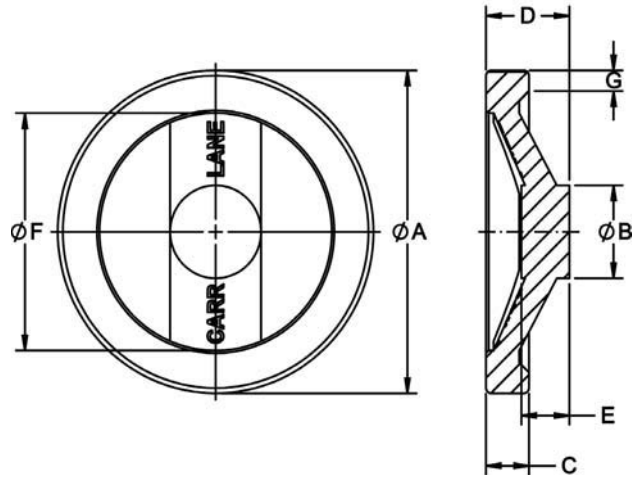


HAND WHEELS

ALUMINUM: PLAIN FINISH
STAINLESS STEEL: PASSIVATED FINISH



High-quality, modern-design with the choice of aluminum or stainless steel Hand Wheel with two spokes. Rim is machined and highly polished on all sides. Spokes are shot blasted to a satin finish. Available in four sizes, from 5" to 10" diameter. These Hand Wheels are finish-bored to the standard shaft diameter for their size, exactly concentric and square to the rim, and can be tapped for a Solid or Revolving Handle (order separately). See Related Products below for matching solid-design stainless steel handles, and other handle options.



Inch-Aluminum

PART NO.	A DIA	B DIA	C	D	E	F DIA	G
CL-4-HWFA	3.94	1.22	.59	1.10	.709	2.72	.315
CL-5-HWFA	4.92	1.42	.67	1.30	.748	3.62	.315
CL-6-HWFA	5.90	1.42	.71	1.57	.827	4.41	.394
CL-8-HWFA	7.87	1.65	.83	1.97	.945	6.10	.433

Inch-Stainless Steel

PART NO.	A DIA	B DIA	C	D	E	F DIA	G
CL-4-HWFS	3.94	1.22	.59	1.10	.709	2.72	.315
CL-5-HWFS	4.92	1.42	.67	1.30	.748	3.62	.315
CL-6-HWFS	5.90	1.42	.71	1.57	.827	4.41	.394
CL-8-HWFS	7.87	1.65	.83	1.97	.945	6.10	.433