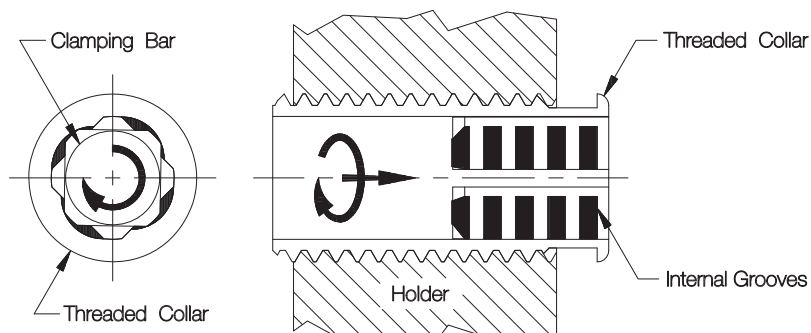
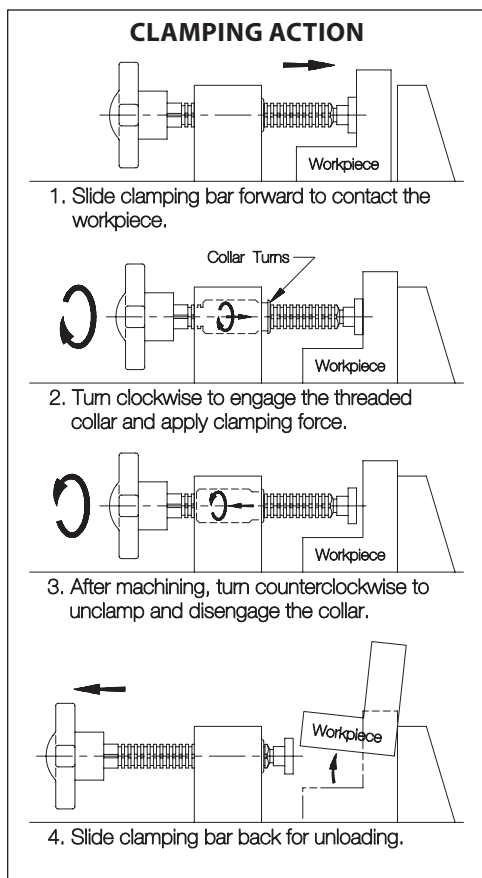


BAR-LOK QUICK-ACTING SCREW CLAMPS

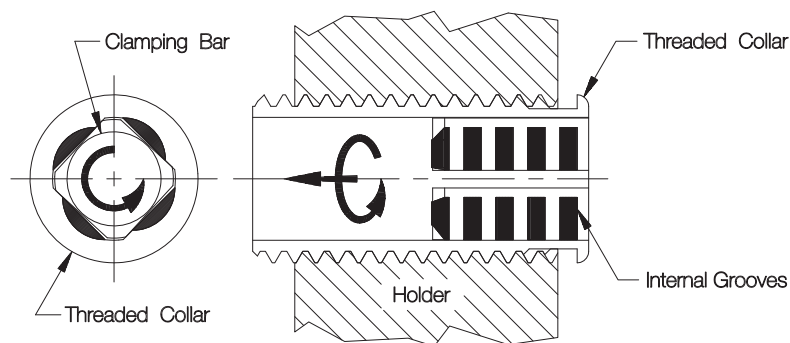
1215 STEEL, CASE HARDENED, ZINC PLATED YELLOW CHROMATE
 KNOB HANDLE: 319 ALUMINUM ALLOY

3



Clockwise

Turning the clamping bar clockwise engages internal grooves in the threaded collar. Both components then turn together as a single unit to apply screw force.

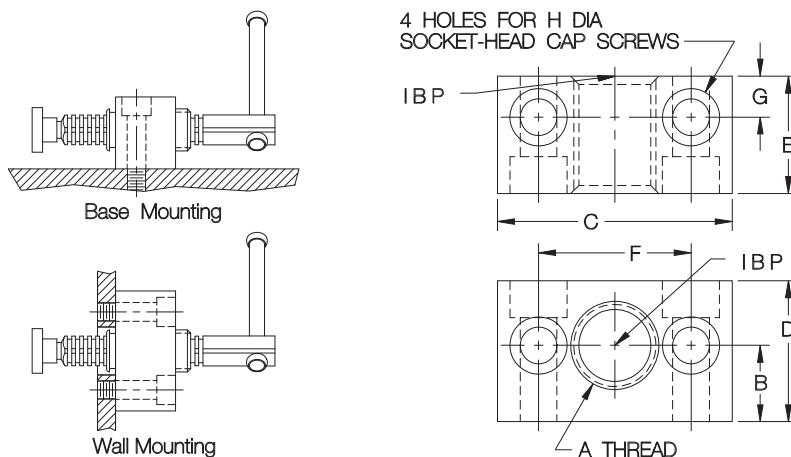


Counterclockwise

Turning the clamping bar clockwise engages internal grooves in the threaded collar. Both components then turn together as a single unit to apply screw force.



Mounting Block



MOUNTING BLOCKS

PART NO.	A THREAD	B	C	D	E	F	G	H DIA
CL-1-BLM	3/4-10		2-1/8	1-3/8	1-1/4	1-3/8		5/16 OR M8
CL-2-BLM	7/8-9	13/16	2-1/2	1-1/2		1-5/8	7/16	3/8 OR M10
CL-3-BLM	1-1/8-7	1	3-1/8	1-7/8	1-1/2	2-1/8	1/2	1/2 OR M12