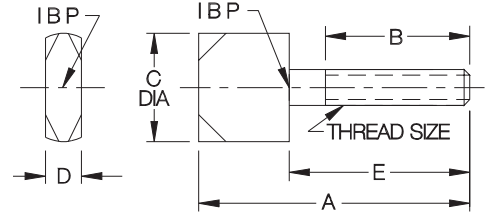
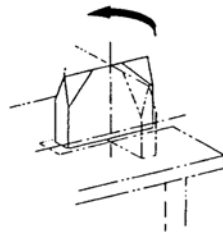
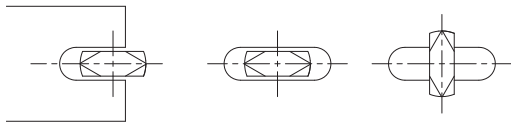


QUARTER-TURN SCREWS

1215 STEEL, CASE HARDENED, BLACK OXIDE FINISH



Rotate screw 90 degrees (1/4 turn) to latch. Ideal for swing-away lids and jig plates. Beveled edges allow easy insertion into a slot. Also available soft (not carburized-hardened) for customizing as desired.



Use quarter-turn screws in either open or closed slots.

INCH

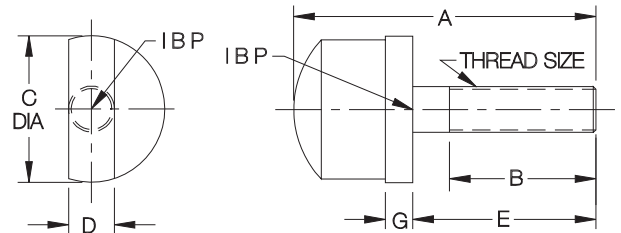
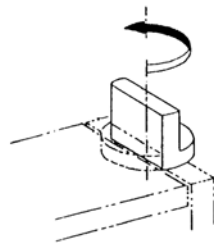
PART NO. HARDENED	PART NO. SOFT	THREAD PITCH	A	B	C DIA	D	E
CL-1-QTS	CL-10-QTS	#10-24	1-1/2	7/8	5/8	3/16	1
CL-2-QTS	CL-20-QTS	#10-32			1/2		
CL-3-QTS	CL-30-QTS	1/4-20	1-7/8	1	3/4	1/4	1-1/4
CL-4-QTS	CL-40-QTS	5/16-18	2-1/4	1-1/4	1	5/16	1-1/2
CL-5-QTS	CL-50-QTS	3/8-16	2-1/2			3/8	
CL-6-QTS	CL-60-QTS	1/2-13	2-3/4	1-1/2	1-1/4	1/2	1-3/4

METRIC

PART NO.	THREAD SIZE	THREAD PITCH (mm)	A (mm)	B (mm)	C DIA (mm)	D (mm)	E (mm)
CLM-5-QTS	M5	.8	40	20	16	5	25
CLM-6-QTS	M6	1	50	25	19	6	30
CLM-8-QTS	M8	1.25	60	35	25.5	8	40
CLM-10-QTS	M10	1.5	65			10	
CLM-12-QTS	M12	1.75	70	40	32	12	45

HALF-TURN SCREWS

1215 STEEL, CASE HARDENED, BLACK OXIDE FINISH



INCH

PART NO.	THREAD SIZE	A	B	C DIA	D	E	G
CL-1-HTS	#10-32	1-11/16	7/8	3/4	3/16	1	3/16
CL-2-HTS	1/4-20	2	1	3/4	1/4	1-1/4	
CL-3-HTS	5/16-18	2-1/16		1-1/2	1		5/16
CL-4-HTS	3/8-16	2-11/16	1-1/16		3/8	1/2	
CL-5-HT	1/2-13	2-3/4	1-1/4				

METRIC

PART NO.	THREAD SIZE	THREAD PITCH (mm)	A (mm)	B (mm)	C DIA (mm)	D (mm)	E (mm)	G (mm)
CLM-5-HTS	M5	.8	43	22	19	5	25	5
CLM-6-HTS	M6	1	49	24	19	6	30	5
CLM-8-HTS	M8	1.25	50	24	25.5	8	30	5
CLM-10-HTS	M10	1.5	69	39	27	10	45	6

Rotate screw 180 degrees (1/2 turn) to latch. Allows latching swing-away lids and jig plates without machining a slot.