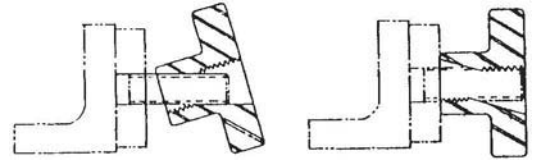


QUICK-ACTING KNOBS

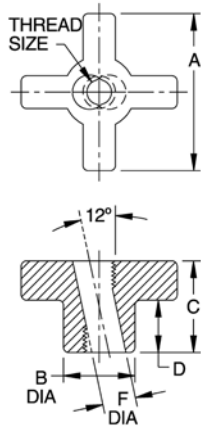
SINTERED IRON



Tilt knob to slide in and out.

Straighten knob to engage threads for clamping.

Quick-acting four-prong knob that slides in and out of clamping position, ideal when the knob must be completely removed for loading. Tilt knob to slide in, then straighten to engage threads and tighten. To remove, loosen knob, then tilt to slide out. Four-prong design provides a firm grip for applications requiring quick tightening and high torque. For full strength, use a stud that extends slightly beyond the knob, to engage all threads.



INCH

PART NO.	THREAD SIZE	A	B DIA	C	D	F DIA
CL-1-QAK	1/4-20	1-1/8	9/16	5/8	5/16	17/64
CL-2-QAK	5/16-18	1-1/2	11/16	7/8	1/2	21/64
CL-3-QAK	3/8-16	2	13/16	1		25/64
CL-4-QAK	1/2-13	2-1/2	1	1-1/8	9/16	33/64
CL-5-QAK	5/8-11	3	1-1/4	1-1/4	5/8	41/64

METRIC

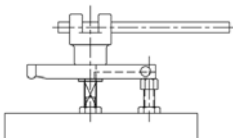
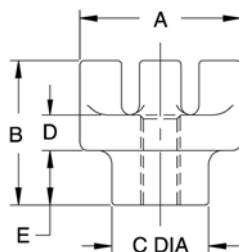
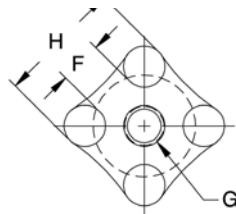
PART NO.	THREAD SIZE	THREAD PITCH (mm)	A (mm)	B DIA (mm)	C (mm)	D (mm)	F DIA (mm)
CLM-6-QAK	M6	1	29	14	16	8	6.5
CLM-8-QAK	M8	1.25	38	17	22	12.5	8.5
CLM-10-QAK	M10	1.5	51	21	25	12.5	10.5
CLM-12-QAK	M12	1.75	64	25	29	14	12.5
CLM-16-QAK	M16	2	76	32	32	16	16.5

BAR KNOBS

CAST IRON, ZINC PLATED CLEAR CHROMATE



Heavy-duty knob that can be turned easily by hand, then tightened by inserting a bar between the prongs. Choose from three knob sizes, each available blank or with a choice of tapped holes.



INCH & METRIC

PART NO.	A	B	C DIA	D	E	F	G	H
CL-1-BK	2	2-1/8	1-1/4	1/2	7/8	7/16	BLANK	1-5/8
CL-2-BK							3/8-16	
CL-4-BK							1/2-13	
CL-6-BK							5/8-11	
CLM-2-BK	2-1/2	2-3/8	1-1/2	9/16	15/16	11/16	M10	2
CLM-4-BK							M12	
CLM-6-BK							M16	
CL-8-BK							BLANK	
CL-9-BK	3-1/2	2-3/8	2-1/8	9/16	15/16	1-5/16	1/2-13	2-7/8
CL-11-BK							5/8-11	
CL-13-BK							3/4-10	
CLM-9-BK							M12	
CLM-11-BK	3-1/2	2-3/8	2-1/8	9/16	15/16	1-5/16	M16	2-7/8
CLM-13-BK							M20	
CL-15-BK							BLANK	
CL-16-BK							3/4-10	
CL-18-BK	3-1/2	2-3/8	2-1/8	9/16	15/16	1-5/16	7/8-9	2-7/8
CL-20-BK							1"-8	
CLM-16-BK							M20	
CLM-20-BK							M24	