

FOUR-PRONG KNOBS



3/8-16 x 1
3/8-16 x 1-1/2
3/8-16 x 2
3/8-16 x 2-1/2
1/2-13 x 1-1/2
1/2-13 x 2
1/2-13 x 2-1/2
M10 x 40mm

CL-5A-PPK4T
CL-5B-PPK4T
CL-5-PPK4T
CL-6-PPK4T
CL-7B-PPK4T
CL-7C-PPK4T
CL-7-PPK4T
CLM-1040-PPK4T



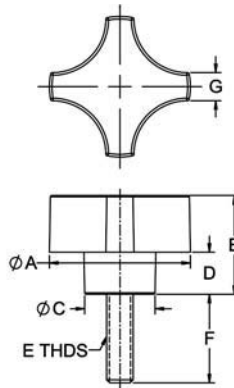
1/4-20 x 1
5/16-18 x 1
5/16-18 x 1-1/2
5/16-18 x 2
M8 x 30mm

CL-1-PPK2T
CL-3A-PPK2T
CL-4A-PPK2T
CL-4B-PPK2T
CLM-830-PPK-2T



#10-24 x 3/4
#10-32 x 3/4
1/4-20 x 1
M6 x 20mm

CL-1B-PPK1T
CL-1A-PPK1T
CL-1-PPK1T
CLM-620-PPK1T

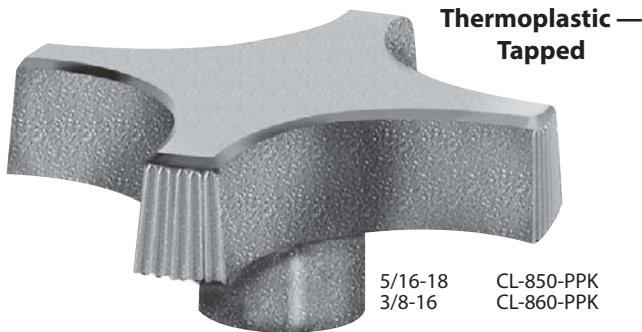


PHENOLIC — STUD TYPE (INCH & METRIC)

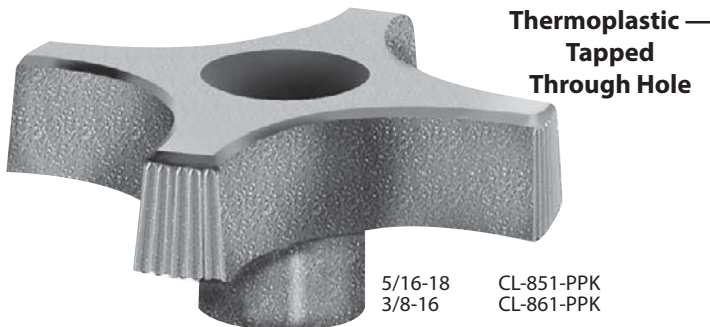
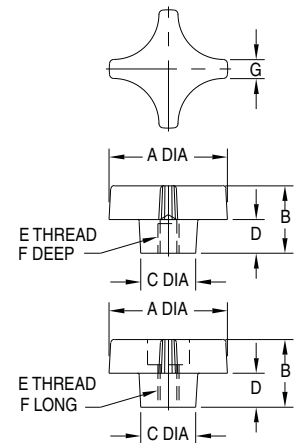
PART NO.	A	B	C DIA	D	E	F	G
CL-1B-PPK1T	1-1/4	7/8	5/8	3/8	#10-24	3/4	1/4
CL-1A-PPK1T					#10-32	3/4	
CL-1-PPK1T					1/4-20	1	
CLM-620-PPK1T					M6	.79	
CL-1-PPK2T	1-3/4	1	13/16	1/2	1/4-20	1	9/32
CL-3A-PPK2T						1	
CL-4A-PPK2T					5/16-18	1-1/2	
CL-4B-PPK2T						2	
CLM-830-PPK2T					M8	1.18	
CL-5A-PPK4T	2-1/4	1-1/8	1	9/16		1	5/16
CL-5B-PPK4T						1-1/2	
CL-5-PPK4T					3/8-16	2	
CL-6-PPK4T						2-1/2	
CL-7B-PPK4T						1-1/2	
CL-7C-PPK4T					1/2-13	2	
CL-7-PPK4T			2-1/2				
CLM-1040-PPK4T					M10	1.57	

FOUR-PRONG KNOBS

BLACK THERMOPLASTIC WITH BRASS INSERT



Four-prong design in thermoplastic, with a textured non-slip, non-glare finish. Molded-in brass insert provides superior thread strength. Non-standard thread sizes, reamed holes, molded-in studs, or special colors are available in quantities of 500 and above.



THERMOPLASTIC — TAPPED (INCH)

PART NO.	A	B	C DIA	D	E	F	G
CL-850-PPK	3	1-1/4	7/8	9/16	5/16-18	5/8	1/2
CL-860-PPK					3/8-16		

THERMOPLASTIC — TAPPED THROUGH HOLE (INCH)

CL-851-PPK	3	1-1/4	7/8	9/16	5/16-18	5/8	1/2
CL-861-PPK					3/8-16		