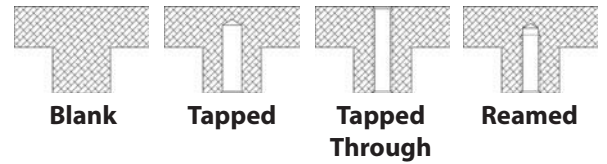
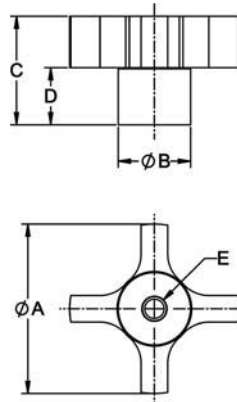


# HAND KNOBS

EXTRUDED HAND KNOB, EXTRUDED ALUMINUM, GREEN ANODIZE



Extruded hand knob use, easy-to-grip aluminum clamping knob. Four-prong design provides a firm grip for applications requiring quick tightening and high torque. Extruded hand knobs available blank, tapped, tapped through, or reamed. Available with tapped-hole sizes from 1/4-20 to 3/4-10 (M6 to M20 in metric) and reamed hole sizes from 1/4 to 3/4 (6mm to 20mm in metric).

## GREEN ANODIZE (INCH)

PART NO.	A DIA	B DIA	C	D	E DIA	E DEPTH
CL-0-HKE-00	1	1/2	7/8	1/2	-	-
CL-0-HKE-10	1-1/2	5/8	7/8	3/8	-	-
CL-0-HKE-20	1-3/4	3/4	1-1/8	19/32	-	-
CL-0-HKE-30	2	13/16	1-3/8	3/4	-	-
CL-0-HKE-40	2-1/2	1	1-1/2	25/32	-	-
CL-0-HKE-50	3	1-1/4	1-1/4	5/8	-	-
CL-4R-HKE-00	1	1/2	7/8	1/2	1/4	1/2
CL-3R-HKE-20	1-3/4	3/4	1-1/8	19/32	3/16	3/4
CL-4R-HKE-20	1-3/4	3/4	1-1/8	19/32	1/4	3/4
CL-5R-HKE-20	1-3/4	3/4	1-1/8	19/32	5/16	3/4
CL-5R-HKE-30	2	13/16	1-3/8	3/4	5/16	1
CL-6R-HKE-30	2	13/16	1-3/8	3/4	3/8	1
CL-8R-HKE-30	2	13/16	1-3/8	3/4	1/2	1
CL-8R-HKE-40	2-1/2	1	1-1/2	25/32	1/2	1-1/4
CL-10R-HKE-40	2-1/2	1	1-1/2	25/32	5/8	1-1/4
CL-12R-HKE-40	2-1/2	1	1-1/2	25/32	3/4	1-1/4
CL-4T-HKE-00	1	1/2	7/8	1/2	1/4-20	1/2
CL-4T-HKE-20	1-3/4	3/4	1-1/8	19/32	1/4-20	3/4
CL-5T-HKE-20	1-3/4	3/4	1-1/8	19/32	5/16-18	3/4
CL-5T-HKE-30	2	13/16	1-3/8	3/4	5/16-18	1
CL-6T-HKE-30	2	13/16	1-3/8	3/4	3/8-16	1
CL-8T-HKE-30	2	13/16	1-3/8	3/4	1/2-13	1
CL-8T-HKE-40	2-1/2	1	1-1/2	25/32	1/2-13	1
CL-10T-HKE-40	2-1/2	1	1-1/2	25/32	5/8-11	1
CL-12T-HKE-40	2-1/2	1	1-1/2	25/32	3/4-10	1
CL-4TT-HKE-00	1	1/2	7/8	1/2	1/4-20	7/8
CL-4TT-HKE-20	1-3/4	3/4	1-1/8	19/32	1/4-20	1-1/8
CL-5TT-HKE-20	1-3/4	3/4	1-1/8	19/32	5/16-18	1-1/8
CL-5TT-HKE-30	2	13/16	1-3/8	3/4	5/16-18	1-3/8
CL-6TT-HKE-30	2	13/16	1-3/8	3/4	3/8-16	1-3/8
CL-8TT-HKE-30	2	13/16	1-3/8	3/4	1/2-13	1-3/8
CL-8TT-HKE-40	2-1/2	1	1-1/2	25/32	1/2-13	1-1/2
CL-10TT-HKE-40	2-1/2	1	1-1/2	25/32	5/8-11	1-1/2
CL-12TT-HKE-40	2-1/2	1	1-1/2	25/32	3/4-10	1-1/2

## GREEN ANODIZE (METRIC)

PART NO.	A DIA (mm)	B DIA (mm)	C (mm)	D (mm)	E DIA (mm)	E DEPTH (mm)
CLM-6R-HKE-00	25.5	13	22	12.5	6	12.5
CLM-6R-HKE-20	44.5	19	28.5	15	6	19
CLM-8R-HKE-20	44.5	19	28.5	15	8	19
CLM-10R-HKE-30	51	20.5	35	19	10	25.5
CLM-12R-HKE-30	51	20.5	35	19	12	25.5
CLM-12R-HKE-40	63.5	25.5	38	20	12	32
CLM-16R-HKE-40	63.5	25.5	38	20	16	32
CLM-20R-HKE-40	63.5	25.5	38	20	20	32

PART NO.	A DIA (mm)	B DIA (mm)	C (mm)	D (mm)	E THREAD	THREAD PITCH (mm)	E THREAD DEPTH (mm)
CLM-6T-HKE-00	25.5	13	22	12.5	M6	1	12.5
CLM-6T-HKE-20	44.5	19	28.5	15	M6	1	19
CLM-8T-HKE-20	44.5	19	28.5	15	M8	1.25	19
CLM-8T-HKE-30	51	20.5	35	19	M8	1.25	25.5
CLM-10T-HKE-30	51	20.5	35	19	M10	1.5	25.5
CLM-12T-HKE-30	51	20.5	35	19	M12	1.75	25.5
CLM-12T-HKE-40	63.5	25.5	38	20	M12	1.75	25.5
CLM-16T-HKE-40	63.5	25.5	38	20	M16	2	25.5
CLM-20T-HKE-40	63.5	25.5	38	20	M20	2.5	25.5

PART NO.	A DIA (mm)	B DIA (mm)	C (mm)	D (mm)	E THREAD	THREAD PITCH (mm)
CLM-6TT-HKE-00	25.5	13	22	12.5	M6	1
CLM-6TT-HKE-20	44.5	19	28.5	15	M6	1
CLM-8TT-HKE-20	44.5	19	28.5	15	M8	1.25
CLM-8TT-HKE-30	51	20.5	35	19	M8	1.25
CLM-10TT-HKE-30	51	20.5	35	19	M10	1.5
CLM-12TT-HKE-30	51	20.5	35	19	M12	1.75
CLM-12TT-HKE-40	63.5	25.5	38	20	M12	1.75
CLM-16TT-HKE-40	63.5	25.5	38	20	M16	2
CLM-20TT-HKE-40	63.5	25.5	38	20	M20	2.5