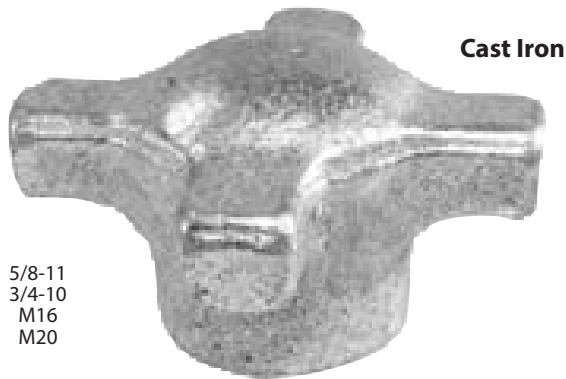
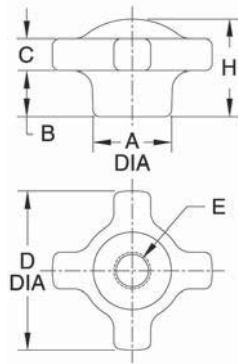


HAND KNOBS

CAST IRON, ZINC PLATED CLEAR CHROMATE



5/8-11
3/4-10
M16
M20



Classic easy-to-grip clamping knob, available in cast iron (shown here) or aluminum. Choose from five cast iron knob sizes, available blank, tapped, or tapped through.



1/2-13
5/8-11
M12
M16



5/16-18
3/8-16
1/2-13
M8
M10
M12



1/4-20
5/16-18
M6
M8



1/4-20
M6

CAST IRON (INCH & METRIC)

PART NO. CAST IRON	D DIA	A DIA	B	C	H	HOLE TYPE	E				
CL-85-HK-8	1-1/8	9/16	5/16	5/16	7/8	BLANK	—				
CL-80-HK-8						TAPPED	1/4-20 x 1/2 DEEP				
CLM-80-HK-8						TAPPED	M6 x 1/2 DEEP				
CL-8-HK-8						THROUGH	1/4-20				
CLM-8-HK-8	1-3/4	3/4	1/2	3/8	1-1/8	THROUGH	M6				
CL-25-HK-2						BLANK	—				
CL-10-HK-2						TAPPED	1/4-20 x 7/8 DEEP				
CL-20-HK-2							5/16-18 x 7/8 DEEP				
CLM-10-HK-2							M6 x 7/8 DEEP				
CLM-20-HK-2							M8 x 7/8 DEEP				
CL-1-HK-2						TAPPED THROUGH	1/4-20	5/16-18	M6	M8	1/4-20
CL-2-HK-2											5/16-18
CLM-1-HK-2											M6
CLM-2-HK-2											M8
CL-45-HK-4	2-1/8	1	5/8	7/16	1-3/8	BLANK	—				
CL-20-HK-4						TAPPED	5/16-18 x 1 DEEP				
CL-30-HK-4							3/8-16 x 1 DEEP				
CL-40-HK-4							1/2-13 x 1 DEEP				
CLM-20-HK-4							M8 x 1 DEEP				
CLM-30-HK-4							M10 x 1 DEEP				
CLM-40-HK-4							M12 x 1 DEEP				
CL-2-HK-4						TAPPED THROUGH	5/16-18				
CL-3-HK-4							3/8-16				
CL-4-HK-4							1/2-13				
CLM-2-HK-4							M8				
CLM-3-HK-4							M10				
CLM-4-HK-4							M12				
CL-105-HK-10							2-1/2	1-1/8	1	1/2	1-5/8
CL-90-HK-9	TAPPED	1/2-13 x 1-1/4 DEEP									
CL-100-HK-10		5/8-11 x 1-1/4 DEEP									
CLM-90-HK-9		M12 x 1-1/4 DEEP									
CL-9-HK-9	TAPPED THROUGH	1/2-13									
CL-10-HK-10		5/8-11									
CLM-9-HK-9		M12									
CLM-10-HK-10		M16									
CL-65-HK-6	2-3/4	1-3/8	3/4	1/2	1-1/2	BLANK	—				
CL-50-HK-6						TAPPED	5/8-11 x 1-1/8 DEEP				
CL-60-HK-6							3/4-10 x 1-1/8 DEEP				
CLM-50-HK-6							M16 x 1-1/8 DEEP				
CLM-60-HK-6							M20 x 1-1/8 DEEP				
CL-5-HK-6						TAPPED THROUGH	5/8-11				
CL-6-HK-6							3/4-10				
CLM-5-HK-6							M16				
CLM-6-HK-6							M20				