

# FLUTED KNOBS

BLACK THERMOPLASTIC OR PHENOLIC PLASTIC WITH BRASS INSERT

## Thermoplastic — Tapped



5/16-18 CL-750-PFK  
3/8-16 CL-760-PFK



5/16-18 CL-550-PFK  
3/8-16 CL-560-PFK



1/4-20 CL-340-PFK  
5/16-18 CL-350-PFK

Thermoplastic version of the Fluted Knobs with a textured non-slip, non-glare finish. Choice of three knob sizes. Molded-in brass insert provides superior thread strength. Non-standard thread sizes, reamed holes, molded-in studs, or special colors are available in quantities of 500 and above.

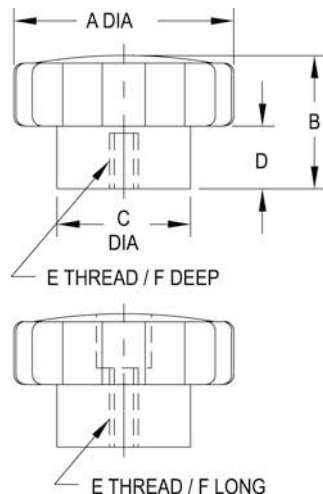
## Thermoplastic — Tapped Through Hole



5/16-18 CL-551-PFK  
3/8-16 CL-561-PFK



1/4-20 CL-341-PFK  
5/16-18 CL-351-PFK



### THERMOPLASTIC — TAPPED

PART NO.	A DIA	B	C DIA	D	E	F
CL-340-PFK	1-1/2	1	3/4	3/8	1/4-20	5/8
CL-350-PFK					5/16-18	
CL-550-PFK	2-5/32	1-1/8	3/4	3/8	5/16-18	3/4
CL-560-PFK					3/8-16	
CL-750-PFK	3-1/4	1-5/8	2	3/4	5/16-18	3/4
CL-760-PFK					3/8-16	

### THERMOPLASTIC — TAPPED THROUGH HOLE

PART NO.	A DIA	B	C DIA	D	E	F
CL-341-PFK	1-1/2	1	3/4	3/8	1/4-20	5/8
CL-351-PFK					5/16-18	
CL-551-PFK	2-5/32	1-1/8	3/4	3/8	5/16-18	3/4
CL-561-PFK					3/8-16	