

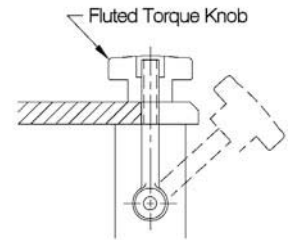
FLUTED KNOBS

BLACK PHENOLIC PLASTIC OR THERMOPLASTIC
WITH BRASS INSERT



1/2-13 CL-88-PFK
5/8-11 CL-810-PFK

Large easy-grip knob that is excellent for either fine-adjustment or high-torque applications. Molded-in brass insert provides superior thread strength. Choice of four knob sizes. Non-standard thread sizes, reamed holes, or molded-in studs are available in quantities of 500 and above.



Phenolic — Tapped Through Hole

Phenolic — Tapped Short Hub



3/8-16 CL-66-PFK
1/2-13 CL-68-PFK
M12 CLM-612-PFK



3/8-16 CL-660-PFK



3/8-16 CL-666-PFK



3/8-16 CL-466-PFK



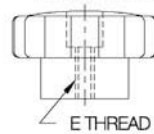
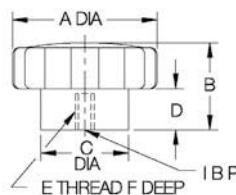
5/16-18 CL-450-PFK



1/4-20 CL-44-PFK
5/16-18 CL-45-PFK
3/8-16 CL-46-PFK
M8 CLM-48-PFK
M10 CLM-410-PFK



#10-32 CL-23-PFK
1/4-20 CL-24-PFK
5/16-18 CL-25-PFK
M6 CLM-26-PFK



PHENOLIC — TAPPED (INCH & METRIC)

PART NO.	A DIA	B	C DIA	D	E	F
CL-23-PFK					#10-32	5/16
CL-24-PFK	1-3/8	27/32	27/32	25/64	1/4-20	7/16
CL-25-PFK					5/16-18	7/16
CLM-26-PFK					M6x1	3/8
CL-44-PFK					1/4-20	7/16
CL-45-PFK					5/16-18	7/16
CL-46-PFK	1-3/4	1-1/16	1-1/16	1/2	3/8-16	1/2
CLM-48-PFK					M8x1.25	7/16
CLM-410-PFK					M10x1.5	
CL-66-PFK					3/8-16	1/2
CL-68-PFK	2-3/8	1-5/16	1-1/4	5/8	1/2-13	
CLM-612-PFK					M12x1.75	5/8
CL-88-PFK	3-1/4	1-25/32	2	7/8	1/2-13	
CL-810-PFK					5/8-11	3/4

PHENOLIC — TAPPED THROUGH HOLE (INCH)

CL-450-PFK	1-3/4	61/64	1-1/16	1/2	5/16-18	5/8
CL-660-PFK	2-3/8	1-9/32	1-1/4	5/8	3/8-16	5/8

PHENOLIC — TAPPED, SHORT HUB (INCH)

CL-466-PFK	1-3/4	11/16	3/4	1/8	3/8-16	3/8
CL-666-PFK	2-3/8	13/16	3/4	1/8	3/8-16	1/2