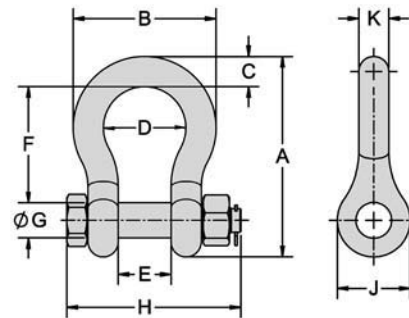


# HOIST RING ACCESSORIES



High-strength forged alloy-steel anchor shackle. Supplied with thin-head bolt and nut with cotter pin. Meets Federal Specification RR-C 271D, Type IVA, Grade A, Class 3. Safety factor = 6:1. Heat treated with black oxide finish. **INFO+**: See general Hoist Ring Safety Precautions on page 71.

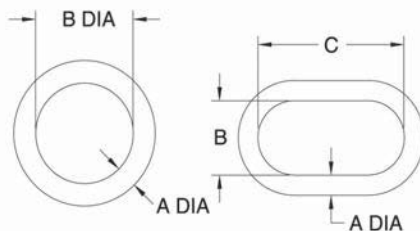


\*ALL DIMENSIONS ARE REFERENCE ONLY

## Forged Anchor Shackles

### FORGED ANCHOR SHACKLES (INCH)

PART NO.	LOAD RATING (LBS)	NOMINAL SHACKLE SIZE	A	B	C	D	E	F	G DIA.	H	J	K
CL-36511-FAS	2000	3/8	2.49	1.78	.38	1.03	.66	1.44	.44	2.17	.91	3/8
CL-36521-FAS	3000	7/16	2.91	2.03	.44	1.16	.75	1.69	.50	2.51	1.06	7/16
CL-36531-FAS	4000	1/2	3.28	2.31	.50	1.31	.81	1.88	.63	2.80	1.19	1/2
CL-36541-FAS	6500	5/8	4.19	2.94	.69	1.69	1.06	2.38	.75	3.53	1.50	5/8
CL-36551-FAS	13000	7/8	5.83	4.03	.97	2.28	1.44	3.31	1.00	4.71	2.09	7/8
CL-36561-FAS	19000	1-1/8	7.47	5.16	1.25	2.91	1.81	4.25	1.25	5.09	2.69	1-1/8
CL-36571-FAS	24000	1-1/4	8.25	5.75	1.38	3.25	2.03	4.69	1.38	6.51	3.00	1-1/4



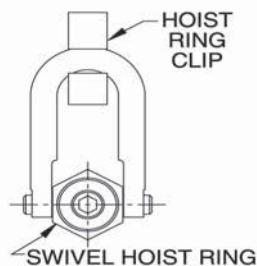
High-strength weldless forged alloy-steel ring. Safety factor = 6:1. Heat treated with black oxide finish. **INFO+**: See general Hoist Ring Safety Precautions on page 71.

### FORGED RINGS

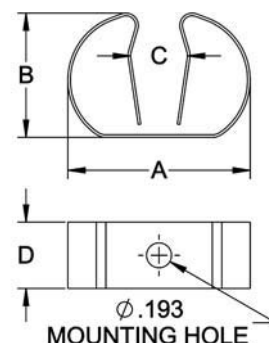
PART NO.	LOAD RATING (LBS)	A DIA.	B DIA.
CL-36111-FR	3800	3/8	2
CL-36121-FR	6100	5/8	3



Hoist-Ring Clips



Handy hold-down clip to keep Swivel Hoist Rings and Side-Pull Hoist Rings from rotating when not in use. Spring steel, zinc plated. Available in two sizes, one fitting ring diameters from 3/8" to 5/8", the other fitting ring diameters from 3/4" to 1-1/16".



### HOIST-RING CLIPS

PART NO.	FITS RING DIAMETER	A ±.050	B ±.050	C ±.050	D
CL-1-HRC	3/8, 7/16, 5/8	1-9/32	15/16	5/16	1/2
CL-2-HRC	3/4, 1-1/16	1-9/16	1-5/16	11/16	5/8