

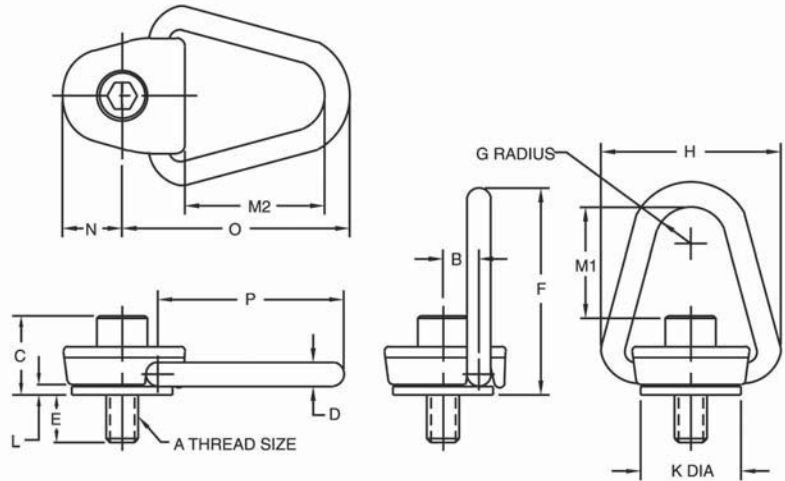
HEAVY-DUTY® SIDE-PULL HOIST RINGS

ALLOY STEEL, BLACK OXIDE FINISH, 100% MAGNAFLUX INSPECTED



Triangular-Ring Type

Heavy-Duty version of our Side-Pull Hoist Rings offers greater load capacity in a given mounting-thread size. Side-Pull Hoist Rings are ideal for side mounting. Flip and turn loads without unhooking (use with a spreader bar). Forged alloy-steel ring pivots and swivels 360 degrees simultaneously to allow lifting from any direction. Safety factor = 5:1. **Patent no. 6,267,422.** Fasten hoist ring using the installation torque specified in the dimension table. Always install so that the hoist ring can pivot and swivel freely. **INFO+** See general Hoist Ring Safety Precautions on page 71.



TRIANGULAR-RING TYPE (INCH)

PART NO.	LOAD RATING (LBS)	A THREAD	B	C	D	E ±.12	F	G	H	K DIA	L	M1	M2	N	O	P	INSTALLATION TORQUE (FT-LBS)
CL-36305-SPHR	800	5/16-18	.87	1.33	.5	.48	4.76	.75	3.88	2.19	.23	2.94	3.17	1.25	5.12	4.25	7
CL-36310-SPHR	1000	3/8-16		1.4		2.88						12					
CL-36315-SPHR	2500	1/2-13		1.52		2.75						28					
CL-36320-SPHR	4000	5/8-11		1.65		2.63						60					
CL-36325-SPHR	5000	3/4-10		1.77		2.5						100					
CL-36330-SPHR	7000	3/4-10	2.22	3.38	100												
CL-36335-SPHR	8000	7/8-9	1.25	2.35	.75	1.28	6.36	.88	5.25	3.13	.31	3.26	3.97	1.63	6.88	5.63	160
CL-36340-SPHR	10000	1-8	2.47	3.13	1.53												230

TRIANGULAR-RING TYPE (METRIC)

PART NO.	LOAD RATING (kg)	A THREAD	THREAD PITCH (mm)	B (mm)	C (mm)	D (mm)	E ±3.0 (mm)	F (mm)	G (mm)	H (mm)	K DIA (mm)	L (mm)	M1 (mm)	M2 (mm)	N (mm)	O (mm)	P (mm)	INSTALLATION TORQUE (N-m)
CLM-36805-SPHR	400	M8	1.25	22	34	13	14	121	19	98	56	6	74	81	32	130	108	9.5
CLM-36810-SPHR	450	M10	1.5		36		24						16					
CLM-36815-SPHR	1050	M12	1.75		38		39						37					
CLM-36820-SPHR	1900	M16	2.0		42		66						80					
CLM-36825-SPHR	2200	M20	2.5		46		62						135					
CLM-36830-SPHR	3000	M20	2.5	32	57	19	38	161	22	133	79	8	85	101	41	175	143	135
CLM-36835-SPHR	4200	M24	3.0		61	43	311											