

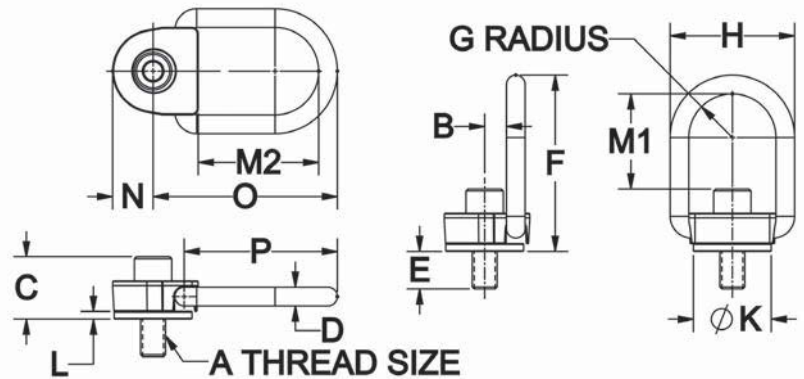
HEAVY-DUTY® SIDE-PULL HOIST RINGS

ALLOY STEEL, BLACK OXIDE FINISH, 100% MAGNAFLUX INSPECTED



D-Ring Type

Heavy-Duty version of our Side-Pull Hoist Rings offers greater load capacity in a given mounting-thread size. D-Ring type shown here is ideal for working with web slings. Side-Pull Hoist Rings are ideal for side mounting. Flip and turn loads without unhooking (use with a spreader bar). Forged alloy-steel ring pivots and swivels 360 degrees simultaneously to allow lifting from any direction. Safety factor = 5:1. **Patent no. 6,267,422.** Fasten hoist ring using the installation torque specified in the dimension table. Always install so that the hoist ring can pivot and swivel freely. **INFO+:** See general Hoist Ring Safety Precautions on page 71.



D-RING TYPE (INCH)

PART NO.	LOAD RATING (LBS)	A	B	C	D	E	F	G	H	K DIA	L	M1	M2	N	O	P	INSTALLTION TORQUE (FT-LBS)
CL-37305-SPHR	800	5/16-18		1.33		.48						3.18					7
CL-37310-SPHR	1000	3/8-16		1.40								3.12					12
CL-37315-SPHR	2500	1/2-13	.88	1.52	.50	.98	5.12	1.44	3.88	2.19	.23	2.99	3.43	1.25	5.48	4.61	28
CL-37320-SPHR	4000	5/8-11		1.65								2.87					60
CL-37325-SPHR	5000	3/4-10		1.77		1.23						2.74					100
CL-37330-SPHR	7000	3/4-10		2.22		1.28						3.76					100
CL-37335-SPHR	8000	7/8-9	1.25	2.35	.75		6.88	1.75	5.00	3.13	.31	3.63	4.34	1.62	7.40	6.15	160
CL-37340-SPHR	10000	1"-8		2.47		1.53						3.51					230

D-RING TYPE (METRIC)

PART NO.	LOAD RATING (kg)	A THREAD	THREAD PITCH (mm)	B (mm)	C (mm)	D (mm)	E (mm)	F (mm)	G (mm)	H (mm)	K DIA (mm)	L (mm)	M1 (mm)	M2 (mm)	N (mm)	O (mm)	P (mm)	INSTALLTION TORQUE (N-m)
CLM-37805-SPHR	400	M8	1.25		34		14						81					9.5
CLM-37810-SPHR	450	M10	1.5		36		24						79					16
CLM-37815-SPHR	1050	M12	1.75	22	38	13	39	130	37	99	56	6	77	87	32	139	117	37
CLM-37820-SPHR	1900	M16	2		42		39						73					80
CLM-37825-SPHR	2200	M20	2.5		46		39						69					135
CLM-37830-SPHR	3000	M20	2.5	32	57	19	38	175	44	127	79	8	94	110	41	188	156	135
CLM-37835-SPHR	4200	M24	3		61		43						90					311