

# NICKLE PLATED FORGED SWIVEL HOIST RING

ALLOY STEEL, HEAT TREATED, ELECTROLESS NICKEL PLATED, 100% MAGNAFLUX INSPECTED



Nickel Plated

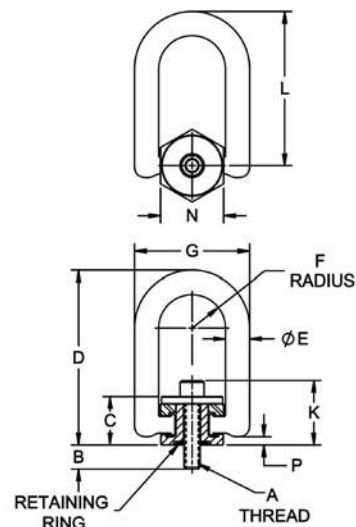
Carr Lane's Nickel Plated Forged Swivel Hoist Rings feature a forged lifting ring and simpler construction for easy disassembly.

Swivel Hoist Rings pivot 180° and swivel 360° simultaneously to allow lifting from any direction.

Available with inch or metric threads in load capacities up to 10,000 lbs, many with a choice of bolt length.

Complies with ASME B30.26, CEN/TC 168 Reference EN 1677-1: 2000 Part 1 and 2006/42/EC. Fasten using the installation torque specified in the dimension table. Always install so that the hoist ring can pivot and swivel freely. Some hoist rings are available with a choice of bolt lengths. Use the shortest bolt length only for steel plates, the other lengths for weaker materials, and for through-hole mounting with a washer and nut. **INFO+**: See general Hoist Ring Safety Precautions on page 71.

Forged Swivel Hoist Rings can be easily disassembled. One benefit of this is easier cleaning.



## NICKEL PLATED FORGED SWIVEL HOIST RING (INCH)

PART NO.	LOAD RATING (TON)	A THREAD	B	C	D	E DIA	F	G	K	L	N	P	INSTALLATION TORQUE (ft/lbs)
CL-1000-FSHR-1-N	.5	3/8-16	.56	.94	3.28	.42	.64	2.26	1.32	2.87	1.22	.17	12
CL-2500-FSHR-1-N	1.25	1/2-13	.75	1.50	5.40	.75	1.04	3.56	2.00	4.77	1.95	.26	28
CL-2500-FSHR-2-N			1.00										
CL-2500-FSHR-3-N			1.25										
CL-4000-FSHR-1-N	2	5/8-11	.75	1.50	5.40	.75	1.04	3.56	2.13	4.77	1.95	.26	60
CL-5000-FSHR-1-N	2.5	3/4-10	1.00	1.50	5.40	.75	1.04	3.56	2.25	4.77	1.95	.26	100
CL-7000-FSHR-1-N	3.5	3/4-10	.95	2.05	7.40	1.13	1.51	5.51	2.92	6.62	2.95	.23	100
CL-8000-FSHR-2-N	4	7/8-9	1.20	2.05	7.40	1.13	1.51	5.51	3.05	6.62	2.95	.23	160
CL-10000-FSHR-1-N	5	1"-8	1.20	2.05	7.40	1.13	1.51	5.51	3.17	6.62	2.95	.23	230

## NICKEL PLATED FORGED SWIVEL HOIST RING (METRIC)

PART NO.	LOAD RATING (TONNE)	A THREAD	B mm	C mm	D mm	E DIA mm	F mm	G mm	K mm	L mm	N mm	P mm	INSTALLATION TORQUE (Nm)
CLM-1050-FSHR-1-N	1.05	M12x1.75	25	38.1	137.3	19	26.3	90.5	49.9	121.3	49.5	6.5	37
CLM-1900-FSHR-2-N	1.9	M16x2.0	32	38.1	137.3	19	26.3	90.5	53.9	121.3	49.5	6.5	80
CLM-3000-FSHR-1-N	3	M20x2.5	28	52.1	188.1	28.6	38.3	139.9	71.8	168.2	75	5.9	135