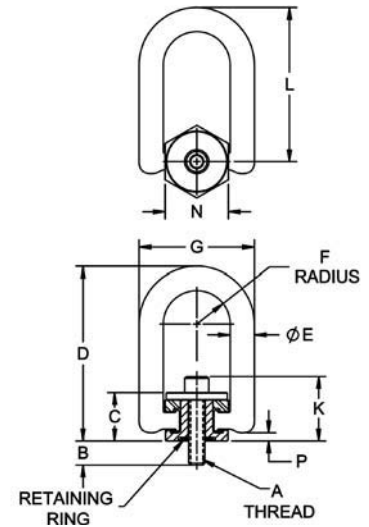


# FORGED SWIVEL HOIST RING

BODY: 4140 STEEL, HEAT TREATED, BLACK OXIDE; RING: 4140 STEEL, HEAT TREATED, BLACK OXIDE  
BUSHING: 4140 STEEL, HEAT TREATED, BLACK OXIDE; WASHER: 17-4PH, H900, PASSIVATED



Carr Lane's Forged Swivel Hoist Rings feature a forged lifting ring and simpler construction for easy disassembly. Swivel Hoist Rings pivot 180° and swivel 360° simultaneously to allow lifting from any direction. Available with inch or metric threads in load capacities up to 10,000 lbs, many with a choice of bolt length. Complies with ASME B30.26, CEN/TC 168 Reference EN 1677-1: 2000 Part 1 and 2006/42/EC. Fasten using the installation torque specified in the dimension table. Always install so that the hoist ring can pivot and swivel freely. Some hoist rings are available with a choice of bolt lengths. Use the shortest bolt length only for steel plates, the other lengths for weaker materials, and for through-hole mounting with a washer and nut. **INFO+**: See general Hoist Ring Safety Precautions on page 71. Forged Swivel Hoist Rings can be easily disassembled. One benefit of this is easier cleaning.



## FORGED SWIVEL HOIST RING (INCH)

PART NO.	LOAD RATING (TON)	A THREAD	B	C	D	E DIA	F	G	K	L	N	P	INSTALLATION TORQUE (ft/lbs)
CL-550-FSHR-1	.275	1/4-20	.26	.94	3.28	.42	.64	2.26	1.19	2.87	1.22	.17	5
CL-800-FSHR-1	.4	5/16-18	.56	.94	3.28	.42	.64	2.26	1.25	2.87	1.22	.17	7
CL-800-FSHR-2			1.06										
CL-1000-FSHR-1	.5	3/8-16	.56	.94	3.28	.42	.64	2.26	1.32	2.87	1.22	.17	12
CL-1000-FSHR-2			1.06										
CL-2250-FSHR-1	1.125	1/2-13	1.06	.94	3.28	.42	.64	2.26	1.44	2.87	1.22	.17	25
CL-2500-FSHR-1	1.25	1/2-13	.75	1.50	5.40	.75	1.04	3.56	2.00	4.77	1.95	.26	28
CL-2500-FSHR-2			1.00										
CL-2500-FSHR-3			1.25										
CL-4000-FSHR-1	2	5/8-11	.75	1.50	5.40	.75	1.04	3.56	2.13	4.77	1.95	.26	60
CL-4000-FSHR-2			1.00										
CL-4000-FSHR-3			1.25										
CL-5000-FSHR-1	2.5	3/4-10	1.00	1.50	5.40	.75	1.04	3.56	2.25	4.77	1.95	.26	100
CL-5000-FSHR-2			1.50										
CL-7000-FSHR-1	3.5	3/4-10	.95	2.05	7.40	1.13	1.51	5.51	2.92	6.62	2.95	.23	100
CL-7000-FSHR-2			1.20										
CL-7000-FSHR-3			1.45										
CL-8000-FSHR-1			.95										
CL-8000-FSHR-2	4	7/8-9	1.20	2.05	7.40	1.13	1.51	5.51	3.05	6.62	2.95	.23	160
CL-10000-FSHR-1			1.20										
CL-10000-FSHR-2	5	1"-8	1.45	2.05	7.40	1.13	1.51	5.51	3.17	6.62	2.95	.23	230
CL-10000-FSHR-3			2.20										

## FORGED SWIVEL HOIST RING (METRIC)

PART NO.	LOAD RATING (TONNE)	A THREAD	B mm	C mm	D mm	E DIA mm	F mm	G mm	K mm	L mm	N mm	P mm	INSTALLATION TORQUE (Nm)
CLM-400-FSHR-1	.4	M8x1.25	16	23.9	83.6	10.7	16.3	57.5	31.7	72.8	31	4.6	9.5
CLM-400-FSHR-2			21										
CLM-450-FSHR-1	.45	M10x1.5	16	23.9	83.6	10.7	16.3	57.5	33.7	72.8	31	4.6	16
CLM-450-FSHR-2			26										
CLM-1050-FSHR-1	1.05	M12x1.75	25	38.1	137.3	19	26.3	90.5	49.9	121.3	49.5	6.5	37
CLM-1050-FSHR-2			32										
CLM-1900-FSHR-1	1.9	M16x2.0	25	38.1	137.3	19	26.3	90.5	53.9	121.3	49.5	6.5	80
CLM-1900-FSHR-2			32										
CLM-2200-FSHR-1	2.2	M20x2.5	25	38.1	137.3	19	26.3	90.5	57.9	121.3	49.5	6.5	135
CLM-2200-FSHR-2			38										
CLM-3000-FSHR-1	3	M20x2.5	28	52.1	188.1	28.6	38.3	139.9	71.8	168.2	75	5.9	135
CLM-4200-FSHR-1	4.2	M24x3.0	38	52.1	188.1	28.6	38.3	139.9	75.8	168.2	75	5.9	310
CLM-4200-FSHR-2			38										