

# STAINLESS SWIVEL HOIST RINGS

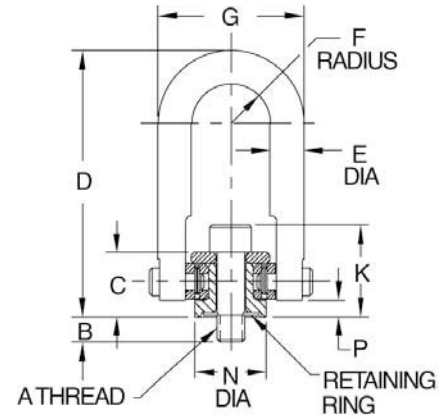
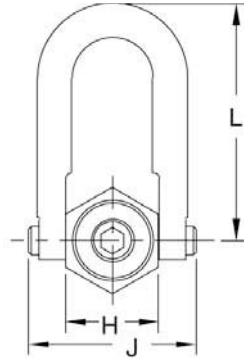
## STANDARD RING — STAINLESS STEEL (METRIC)

PART NO.	LOAD RATING (kg)	A THREAD	THREAD PITCH (mm)	B (mm)	C (mm)	D (mm)	E DIA (mm)	F (mm)	G (mm)	H (mm)	J (mm)	K (mm)	L (mm)	N DIA (mm)	P (mm)	INSTALLATION TORQUE (Nm)
CLM-440-SHR-2-S	200	M8	1.25	17	18	68	9.5	11	41	25.5	47	26	59	19	4.5	5
CLM-500-SHR-1-S	225	M10	1.5	17	18	68	9.5	11	41	25.5	47	28	59	19	4.5	8
CLM-1150-SHR-1-S	525	M12	1.75	19	31	121	19	22	83	51	89	43	108	38	4	19
CLM-29816-SHR-S	950	M16	2	24	31	121	19	22	83	51	89	47	108	38	4	41
CLM-29820-SHR-S	1100	M20	2.5	30	31	121	19	22	83	51	89	51	108	38	4	68
CLM-29822-SHR-S	1500	M20	2.5	29	43	166	25.5	36	121	76	131	64	147	59	6	68
CLM-29824-SHR-S	2100	M24	3	34	43	166	25.5	36	121	76	131	67	147	59	6	156
CLM-29830-SHR-S	2250	M30	3.5	54	43	166	25.5	36	121	76	131	73	147	59	6	156
CLM-29840-SHR-S	3500	M30	3.5	46	54	222	32	44	152	96	165	84	197	81	9	320
CLM-29842-SHR-S	3500	M30	3.5	66	54	222	32	44	152	96	165	84	197	81	9	320
CLM-29850-SHR-S	5500	M36	4	69	71	317	44	57	203	124	217	107	282	107	12	540
CLM-29852-SHR-S	6250	M42	4.5	79	71	317	44	57	203	124	217	113	282	107	12	540
CLM-29854-SHR-S	7250	M48	5	79	71	317	44	57	203	124	217	119	282	107	12	540
CLM-29860-SHR-S	11000	M64	6	102	104	428	57	76	267	166	296	168	368	146	28	1400



**Optional Long-Ring Version**

Long-ring version provides extra reach and allows using larger lifting hooks.



## LONG RING — STAINLESS STEEL (INCH)

PART NO.	LOAD RATING (LBS)	A	B	C	D	E DIA	F	G	H	J	K	L	N DIA	P	INSTALLATION TORQUE (FT-LBS)
CL-29322-SHR-S	1250	1/2-13	.78	1.22	6.72	3/4	.88	3.25	1.99	3.52	1.72	6.19	1.50	.16	14
CL-29323-SHR-S			1.03												
CL-29324-SHR-S			1.28												
CL-29320-SHR-S	2000	5/8-11	1.03	1.22	6.72	3/4	.88	3.25	1.99	3.52	1.85	6.19	1.50	.16	30
CL-29321-SHR-S			1.28												
CL-29325-SHR-S	2500	3/4-10	1.03	1.22	6.72	3/4	.88	3.25	1.99	3.52	1.97	6.19	1.50	.16	50
CL-29327-SHR-S			1.53												
CL-29329-SHR-S	3500	3/4-10	1.04	1.71	8.11	1	1.40	4.80	3.00	5.14	2.46	7.38	2.37	.24	50
CL-29330-SHR-S			1.54												
CL-29328-SHR-S			4000												
CL-29331-SHR-S	5000	1"-8	1.29	1.71	8.11	1	1.40	4.80	3.00	5.14	2.71	7.38	2.37	.24	115
CL-29332-SHR-S			1.54												
CL-29333-SHR-S			2.29												

## LONG RING — STAINLESS STEEL (METRIC)

PART NO.	LOAD RATING (kg)	A THREAD	THREAD PITCH (mm)	B (mm)	C (mm)	D (mm)	E DIA (mm)	F (mm)	G (mm)	H (mm)	J (mm)	K (mm)	L (mm)	N DIA (mm)	P (mm)	INSTALLATION TORQUE (Nm)
CLM-29814-SHR-S	525	M12	1.75	19	31	171	19	22	83	51	89	43	157	38	4	19
CLM-29818-SHR-S	950	M16	2	24	31	171	19	22	83	51	89	47	157	38	4	41
CLM-29821-SHR-S	1100	M20	2.5	30	31	171	19	22	83	51	89	51	157	38	4	68
CLM-29823-SHR-S	1500	M20	2.5	29	43	206	25.5	36	121	76	131	64	187	60	6	68
CLM-29826-SHR-S	2100	M24	3	34	43	206	25.5	36	121	76	131	67	187	60	6	156
Please contact factory	2250	M30	3.5	54	43	206	25.5	36	121	76	131	73	187	60	6	320