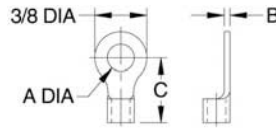


TERMINALS

COPPER, ELECTRO TIN PLATED



Terminals are for crimping on our nylon-coated cable, to allow attaching the end with a screw. Available for #2 and #3 cable.



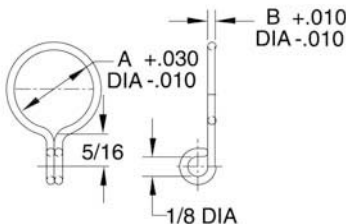
PART NO.	FITS CABLE	A		B	C
		A DIA	SCREW SIZE		
CL-.194-TERM-2	SIZE 2	.21	#10 (or M5)	.03	15/32
CL-.129-TERM	SIZE 3	.13	#5 (or M3)	.04	19/32
CL-.194-TERM		.21	#10 (or M5)	.04	9/16

CABLE RINGS

STEEL: SPRING STEEL, BLACK OXIDE FINISH
STAINLESS: 300-SERIES STAINLESS STEEL



Cable Rings allow attaching Cable Assemblies to a diameter or radial groove. Can be used with cable sizes #1, #2, and #3. Available in steel or stainless steel.



PART NO. STEEL	PART NO. STAINLESS	A DIA	B WIRE DIA	
			STEEL	STAINLESS
CL-2-KR	CL-2-SKR	1/8 (also 3mm)	.045	.062
CL-3-KR	CL-3-SKR	3/16 (also 4&5mm)		
CL-4-KR	CL-4-SKR	1/4 (also 6&7mm)		
CL-5-KR	CL-5-SKR	5/16 (also 8mm)		
CL-6-KR	CL-6-SKR	3/8 (also 9&10mm)		
CL-7-KR	CL-7-SKR	7/16 (also 11mm)		
CL-8-KR	CL-8-SKR	1/2 (also 12&13mm)		
CL-9-KR	CL-9-SKR	9/16 (also 14&15mm)		
CL-10-KR	CL-10-SKR	5/8 (also 16mm)		
CL-11-KR	CL-11-SKR	11/16 (also 17&18mm)		
CL-12-KR	CL-12-SKR	3/4 (also 19&20mm)		
CL-13-KR	CL-13-SKR	13/16 (also 21mm)		
CL-14-KR	CL-14-SKR	7/8 (also 22 or 23mm)		
CL-15-KR	CL-15-SKR	15/16 (also 24mm)		
CL-16-KR	CL-16-SKR	1 (also 25&26mm)		
CL-17-KR	CL-17-SKR	1-1/16 (also 27mm)		
CL-18-KR	CL-18-SKR	1-1/8 (also 28&29mm)		
CL-19-KR	CL-19-SKR	1-3/16 (also 30&31mm)		
CL-20-KR	CL-20-SKR	1-1/4 (also 32mm)		
CL-21-KR	CL-21-SKR	1-5/16 (also 33&34mm)		
CL-22-KR	CL-22-SKR	1-3/8 (also 35 mm)		
CL-23-KR	CL-23-SKR	1-7/16 (also 36&37mm)		
CL-24-KR	CL-24-SKR	1-1/2 (also 38mm)		

CABLE TABS

ALUMINUM: 6061 ALUMINUM ALLOY, CLEAR ANODIZED. STAINLESS: 300-SERIES STAINLESS STEEL, PASSIVATED

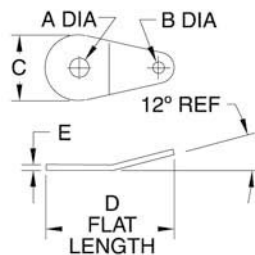


Teardrop



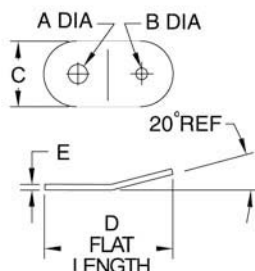
Rectangular

Cable Tabs attach to our nylon-coated cable, to allow attaching the end with a screw. Can be used with cable sizes #1, #2, and #3. Available in two shapes, teardrop and rectangular. Available in aluminum and stainless steel.



TEARDROP

PART NO. ALUMINUM	PART NO. STAINLESS STEEL	FITS CABLE	A		B DIA	C	D	E
			DIA	SCREW SIZE				
CL-.129-TAB-A	CL-.129-TAB-S	SIZES 1 TO 3	.13	#5 (or M3)	.13	.69	1.31	.06
CL-.194-TAB-A	CL-.194-TAB-S		.20	#10 (or M4)				
CL-.281-TAB-A	CL-.281-TAB-S		.28	1/4 (or M6)				



RECTANGULAR

PART NO. ALUMINUM	PART NO. STAINLESS STEEL	FITS CABLE	A		B DIA	C	D	E
			DIA	SCREW SIZE				
CL-.129-TABR-2-A	CL-.129-TABR-2-S	SIZES 1 TO 2	.13	#5 (or M3)	.09	1/2	1.14	.06
CL-.194-TABR-2-A	CL-.194-TABR-2-S		.20	#10 (or M4)				
CL-.281-TABR-2-A	CL-.281-TABR-2-S		.28	1/4 (or M6)				
CL-.194-TABR-3-A	CL-.194-TABR-3-S	SIZES 1 TO 3	.20	#10 (or M4)	.19	1/2	1.14	.06
CL-.281-TABR-3-A	CL-.281-TABR-3-S		.28	1/4 (or M6)				