

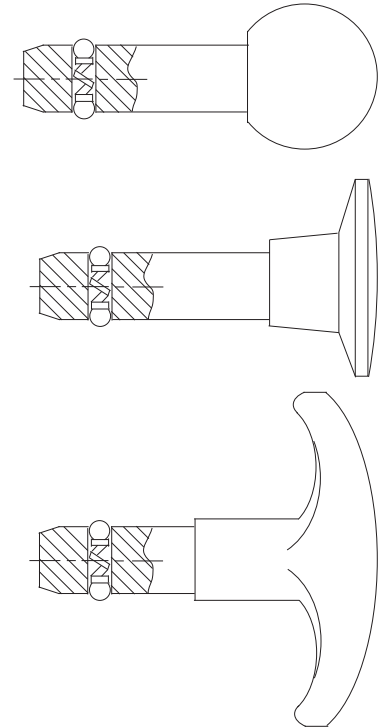
# THREADED DETENT PINS

SHANK: 300-SERIES STAINLESS STEEL  
 SPRING: 17-7PH OR 302 STAINLESS STEEL  
 BALLS: 440C STAINLESS STEEL

1



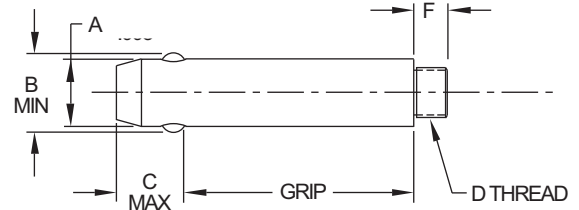
Threaded Detent Pins are solid alignment pins with a ground shank and a threaded end for a knob handle. Two locking balls hold the pin in place by spring force. Simply push to insert, and pull to remove. The threaded end accepts virtually any type of knob handle (order separately — available in steel, stainless steel, and several different plastics). Knob handles can be permanently secured with thread-locking adhesive if desired. Threaded Detent Pins are available in stainless steel only. Standard shank diameters from 3/16 to 1/2" (6 to 10mm in metric), each in a choice of many standard grip lengths. Note: 3/16-diameter pins have only one locking ball instead of two due to their small size. Available from stock only in the standard grip lengths listed (other grip lengths available as specials).



**INFO+:** For a wide selection of knob handles to fit these Threaded Detent Pins, see pages 140-146.

## INCH

PART NO.	A DIA		GRIP LENGTH	B	C	D	F
	NOMINAL	ACTUAL +.000/-0.003					
CL-3-TDP-0.50-S	3/16(#10)	.1880	.50	.200	.250	#8-32	1/4
CL-3-TDP-0.75-S			.75				
CL-3-TDP-1.00-S			1.00				
CL-3-TDP-1.25-S			1.25				
CL-3-TDP-1.50-S			1.50				
CL-3-TDP-1.75-S			1.75				
CL-3-TDP-2.00-S	2.00						
CL-4-TDP-0.50-S	1/4	.2480	.50	.280	.344	#10-32	1/4
CL-4-TDP-0.75-S			0.75				
CL-4-TDP-1.00-S			1.00				
CL-4-TDP-1.25-S			1.25				
CL-4-TDP-1.50-S			1.50				
CL-4-TDP-1.75-S			1.75				
CL-4-TDP-2.00-S	2.00						
CL-4-TDP-2.50-S	2.50						
CL-4-TDP-3.00-S	3.00						
CL-5-TDP-0.75-S	5/16	.3105	.75	.360	.359	1/4-20	3/8
CL-5-TDP-1.00-S			1.00				
CL-5-TDP-1.25-S			1.25				
CL-5-TDP-1.50-S			1.50				
CL-5-TDP-1.75-S			1.75				
CL-5-TDP-2.00-S			2.00				
CL-5-TDP-2.50-S	2.50						
CL-5-TDP-3.00-S	3.00						
CL-6-TDP-0.75-S	3/8	.3730	.75	.430	.390	1/4-20	3/8
CL-6-TDP-1.00-S			1.00				
CL-6-TDP-1.25-S			1.25				
CL-6-TDP-1.50-S			1.50				
CL-6-TDP-1.75-S			1.75				
CL-6-TDP-2.00-S			2.00				
CL-6-TDP-2.50-S	2.50						
CL-6-TDP-3.00-S	3.00						
CL-6-TDP-3.50-S	3.50						
CL-6-TDP-4.00-S	4.00						
CL-8-TDP-1.00-S	1/2	.4980	1.00	.570	.516	3/8-16	1/2
CL-8-TDP-1.50-S			1.50				
CL-8-TDP-2.00-S			2.00				
CL-8-TDP-2.50-S			2.50				
CL-8-TDP-3.00-S			3.00				
CL-8-TDP-3.50-S			3.50				
CL-8-TDP-4.00-S	4.00						



## METRIC

PART NO.	A DIA (mm)		GRIP LENGTH (mm)	B (mm)	C (mm)	D THREAD	F (mm)
	NOMINAL	ACTUAL +.000/-0.076					
CLM-6-TDP-15-S	6	5.95	15	6.75	8.74	M5	6
CLM-6-TDP-20-S	6	5.95	20	6.75	8.74	M5	6
CLM-6-TDP-25-S	6	5.95	25	6.75	8.74	M5	6
CLM-6-TDP-30-S	6	5.95	30	6.75	8.74	M5	6
CLM-6-TDP-40-S	6	5.95	40	6.75	8.74	M5	6
CLM-6-TDP-50-S	6	5.95	50	6.75	8.74	M5	6
CLM-8-TDP-20-S	8	7.95	20	9.22	9.11	M6	10
CLM-8-TDP-25-S	8	7.95	25	9.22	9.11	M6	10
CLM-8-TDP-30-S	8	7.95	30	9.22	9.11	M6	10
CLM-8-TDP-40-S	8	7.95	40	9.22	9.11	M6	10
CLM-8-TDP-50-S	8	7.95	50	9.22	9.11	M6	10
CLM-10-TDP-20-S	10	9.95	20	11.45	9.90	M8	10
CLM-10-TDP-25-S	10	9.95	25	11.45	9.90	M8	10
CLM-10-TDP-30-S	10	9.95	30	11.45	9.90	M8	10
CLM-10-TDP-40-S	10	9.95	40	11.45	9.90	M8	10
CLM-10-TDP-50-S	10	9.95	50	11.45	9.90	M8	10