

LIFTING PINS

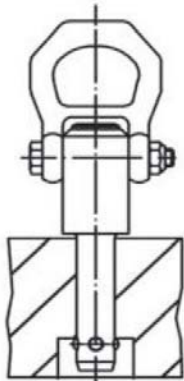
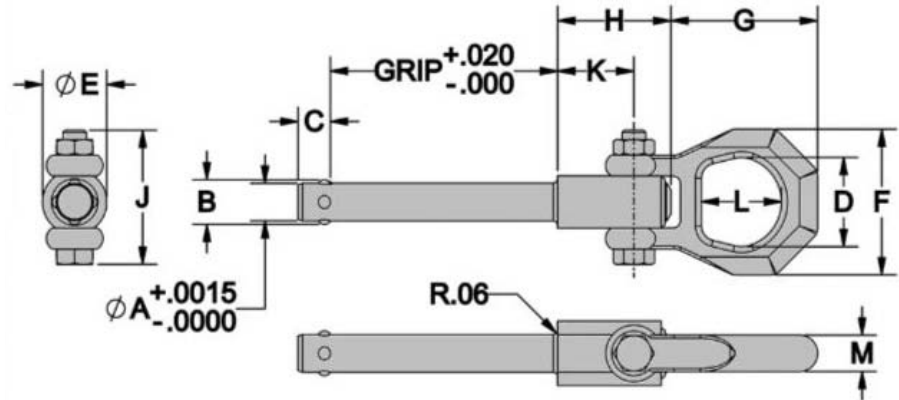
SHANK: ALLOY STEEL, HEAT TREATED, MANGANESE PHOSPHATE FINISH; SPINDLE: ALLOY STEEL, MANGANESE PHOSPHATE FINISH;
 SHACKLE: ALLOY STEEL, HEAT TREATED, MANGANESE PHOSPHATE FINISH; BUTTON: ALUMINUM ALLOY, RED ANODIZED;
 CAP SCREW, NUT, AND BUSHING: STEEL, ZINC PLATED CLEAR CHROMATE; SPRING: STAINLESS STEEL; BALLS: 440C STAINLESS STEEL

1



Alloy Steel

A single-acting ball lock pin with a solid, one-piece body and four balls for high tension loads. Positive locking until released by pushing the button. Sturdy forged shackle for heavy lifting. Manganese phosphate finish provides excellent lubricity and corrosion resistance. **INFO+**: See safety precautions on page 71.



ALLOY STEEL (INCH)

PART NO.	A DIA		GRIP LENGTH	B	C	D	E DIA	F	G	H	J	K	L	M
	NOMINAL	ACTUAL												
CL-4-LFPM-0.50	1/4	.2470/.2485	0.50	.29	.33									
CL-4-LFPM-1.00			1.00											
CL-4-LFPM-1.50			1.50											
CL-6-LFPM-0.50	3/8	.3720/.3735	0.50	.44	.40	1.18	0.85	1.93	1.94	1.50	2.06	1.01	1.06	0.37
CL-6-LFPM-1.00			1.00											
CL-6-LFPM-1.50			1.50											
CL-6-LFPM-2.00			2.00											
CL-8-LFPM-1.50			1.50											
CL-8-LFPM-2.00			2.00											
CL-8-LFPM-3.00	3.00													

TECHNICAL DATA

PART NO.	LOAD CAPACITY (LBS)*			X		RECOMMENDED HOLE DIA	
	STRAIGHT	45°	90°	MIN	MAX	MAX	MIN
CL-4-LFPM-x.xx	210	170	110	.06	.20	.254	.250
CL-6-LFPM-x.xx	600	540	470		.39	.379	.375
CL-8-LFPM-x.xx	790	720	630		.59	.505	.500

* 5:1 Safety factor, based on the average failing load of test specimens. See above for allowable installation-hole tolerances. Straight pull capacity assumes pin is installed in a hardened tool steel plate or bushing. Use standard lifting hook so that button is not depressed while lifting.

