

# LIFTING PINS (STAINLESS STEEL)

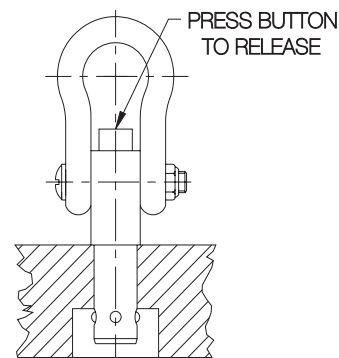
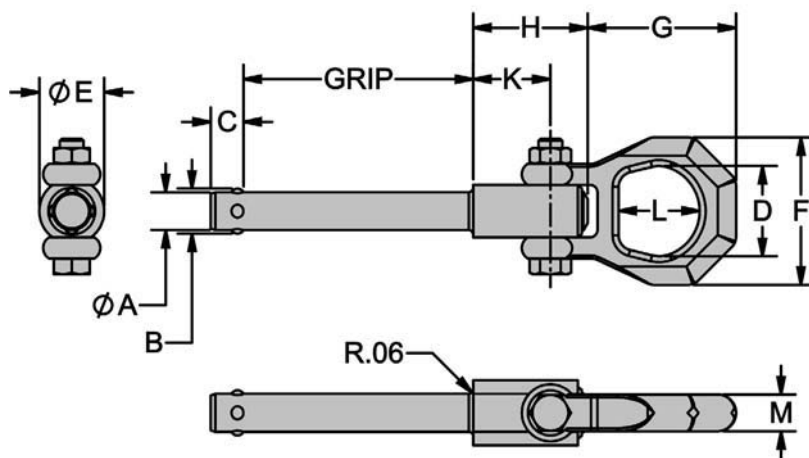
PIN: STAINLESS STEEL, HEAT TREATED PRECIPITATION-HARDENED; BUTTON: ALUMINUM, RED-ANODIZE; SHACKLE: STAINLESS STEEL; SPRING: STAINLESS STEEL

1



Stainless Steel

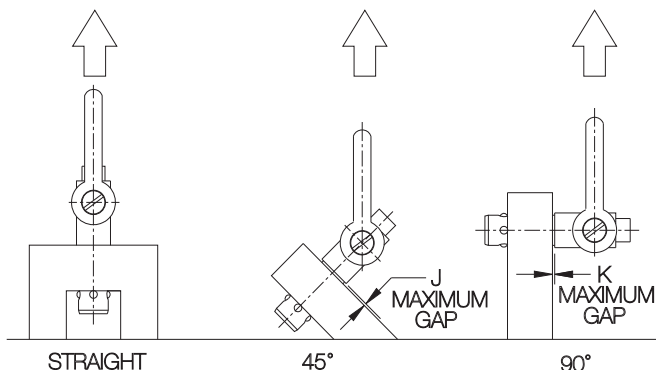
Stainless Steel Lifting Pins are corrosion-resistant single-acting Ball Lock Pins with a solid, one-piece body and four balls for high tension loads. Positive locking until released by pushing the button. Sturdy forged shackle for heavy lifting. **INFO+**: See safety precautions on page 71.



TYPICAL INSTALLATION

## STAINLESS STEEL (INCH)

PART NO.	A DIA		GRIP LENGTH +.024/-.000	B	C ±.04	D	E DIA	F	G	H	K	L	M
	NOMINAL	ACTUAL											
CL-4-LFPM-0.50-S	1/4	.2470/.2485	0.50	.29	.33	1.18	0.85	1.93	1.94	1.50	1.01	1.06	0.37
CL-4-LFPM-1.00-S			1.00										
CL-4-LFPM-1.50-S			1.50										
CL-6-LFPM-0.50-S	3/8	.3720/.3735	0.50	.44	.40	1.18	0.85	1.93	1.94	1.50	1.01	1.06	0.37
CL-6-LFPM-1.00-S			1.00										
CL-6-LFPM-1.50-S			1.50										
CL-6-LFPM-2.00-S			2.00										
CL-6-LFPM-3.00-S			3.00										
CL-8-LFPM-1.00-S	1/2	.4970/.4985	1.00	.59	.44	1.18	0.85	1.93	1.94	1.50	1.01	1.06	0.37
CL-8-LFPM-1.50-S			1.50										
CL-8-LFPM-2.00-S			2.00										
CL-8-LFPM-3.00-S			3.00										
CL-12-LFPM-1.00-S	3/4	.7470/.7485	1.00	.89	.78	1.42	1.26	2.21	2.29	2.20	1.44	1.29	.43
CL-16-LFPM-1.00-S	1	.9970/.9985	1.00	1.22	.82	1.42	1.38						



## TECHNICAL DATA

PART NO.	LOAD CAPACITY (LBS)*			J (45°)	K (90°)	RECOMMENDED HOLE DIA	
	STRAIGHT	45°	90°			MAX	MIN
CL-4-LFPM-x.xx-S	210	170	110	.031	.037	.254	.250
CL-6-LFPM-x.xx-S	600	540	470	.036	.042	.379	.375
CL-8-LFPM-x.xx-S	790	720	630			.505	.500
CL-12-LFPM-x.xx-S	2200	2200	2000	.041	.047	.757	.750
CL-16-LFPM-x.xx-S	2900	2800	2500	.046	.052	1.010	1.000

\* 5:1 Safety factor, based on the average failing load of test specimens. See above for allowable installation-hole tolerances. Straight pull capacity assumes pin is installed in a hardened tool steel plate or bushing. Use standard lifting hook so that button is not depressed while lifting.