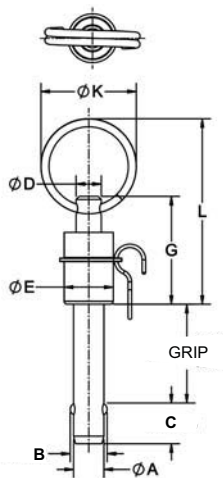


DOUBLE-ACTING BALL LOCK PINS



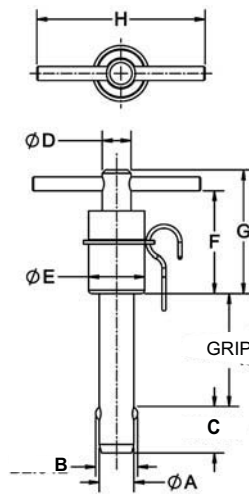
Ring Handle



BPDR



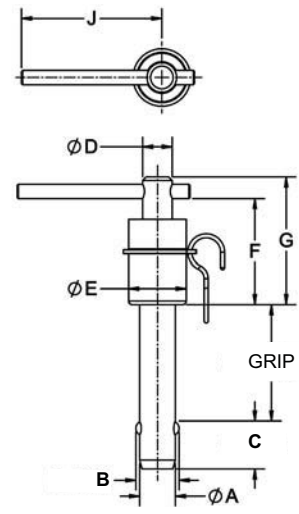
T Handle



BPDT



L Handle



BPDL

INCH

PART NO.	A DIA		B ± .012	C ± .010	D DIA	E DIA	F	G	H	J	K DIA	L	M	
	NOMINAL	ACTUAL												
CL-3-BPDX-x.xx-S	3/16 (#10)	.1885/.1870	.219	.385	.19	7/16	.86	1.02	1-1/2	1-1/4	1	1.86	.12	
CL-4-BPDX-x.xx-S	1/4	.2485/.2470	.290	.415	.25	1/2							.86	1.06
CL-5-BPDX-x.xx-S	5/16	.3110/.3095	.375			.485	.31	5/8	.97	1.24				
CL-6-BPDX-x.xx-S	3/8	.3735/.3720	.438	.565	.43								11/16	1.14
CL-7-BPDX-x.xx-S	7/16	.4360/.4345	.508			.635	.56	1-1/8	1.29	1.59				
CL-8-BPDX-x.xx-S	1/2	.4985/.4970	.592	.725	.56								1-1/4	1.47
CL-9-BPDX-x.xx-S	9/16	.5610/.5595	.666			.750	.56	1-1/4	1.47	1.77	2-25/32	2-3/16		
CL-10-BPDX-x.xx-S	5/8	.6235/.6220	.750	.886	.56								1-1/4	1.47
CL-12-BPDX-x.xx-S	3/4	.7485/.7470	.886			.925	.56	1-1/4	1.47	1.77	2-25/32	2-3/16		
CL-14-BPDX-x.xx-S	7/8	.8735/.8720	1.044	1.075	.56								1-1/4	1.47
CL-16-BPDX-x.xx-S	1	.9985/.9970	1.217			1.075	.56	1-1/4	1.47	1.77	2-25/32	2-3/16		

METRIC

BASIC PART NO.	A DIA (mm)		B ± .304 (mm)	C ± .254 (mm)	D DIA (mm)	E DIA (mm)	F (mm)	G (mm)	H (mm)	J (mm)	K DIA (mm)	L (mm)	M (mm)
	NOMINAL	ACTUAL											
CLM-5-BPDX-xx-S	5	4.96 / 4.92	5.38	9.78	5	11	22	26	38	32	25.5	47	3
CLM-6-BPDX-xx-S	6	5.96 / 5.92	7.06	9.78	5	11	22	26	38	32	25.5	47	3
CLM-8-BPDX-xx-S	8	7.96 / 7.92	9.42	10.54	6.5	12.5	22	26	38	32	25.5	47	3.5
CLM-10-BPDX-xx-S	10	9.96 / 9.92	11.91	12.32	6.5	16	22	27	48.5	36.5	25.5	47	4
CLM-12-BPDX-xx-S	12	11.96 / 11.92	14.40	14.35	8	17.5	24.5	31.5	55.5	40.5	25.5	50	4.5
CLM-16-BPDX-xx-S	16	15.96 / 15.92	19.00	18.42	11	20.5	29	36.5	62	44.5	33.5	62	6.5
CLM-20-BPDX-xx-S	20	19.96 / 19.92	24.08	23.50	14	28.5	33	40.5	70.6	55.5	33.5	66.5	7