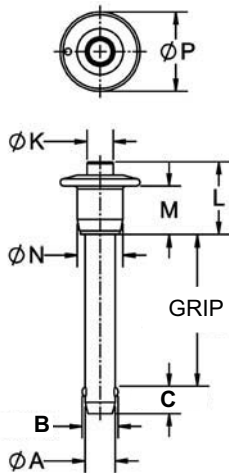


MARINE BALL LOCK PINS

1



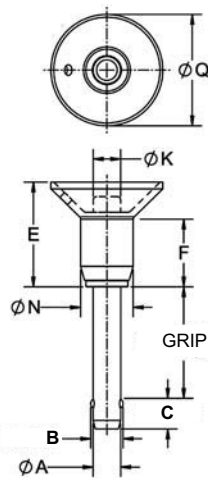
Button Handle (B)



MBPB



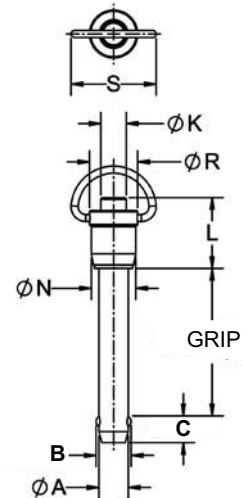
Recessed Button Handle (M)



MBPM



Ring Handle (R)



MBPR

INCH

BASIC PART NO.	A DIA		B ±.012	C ±.010	K DIA	L	M	N DIA	P DIA
	NOMINAL	ACTUAL							
CL-3-MBPx-x.xx-S	3/16 (#10)	.1885 / .1870	.219	.245	.25	.81	.56	.47	.79
CL-4-MBPx-x.xx-S	1/4	.2485 / .2470	.290	.275	.25	.81	.56	.47	.79
CL-5-MBPx-x.xx-S	5/16	.3110 / .3095	.375	.315	.25	.92	.65	.47	.88
CL-6-MBPx-x.xx-S	3/8	.3735 / .3720	.438	.350	.31	.98	.65	.59	1.00
CL-8-MBPx-x.xx-S	1/2	.4985 / .4970	.592	.455	.44	1.20	.80	.75	1.31
CL-10-MBPx-x.xx-S	5/8	.6235 / .6220	.750	.565	.50	1.56	1.00	.93	1.56
CL-12-MBPx-x.xx-S	3/4	.7485 / .7470	.886	.655	.50	1.56	1.00	.93	1.56

METRIC

PART NO.	A DIA (mm)		B ±.304 (mm)	C ±.254 (mm)	K DIA (mm)	L (mm)	M (mm)	N (mm)	P DIA (mm)
	NOMINAL	ACTUAL							
CLM-5-MBPx-xx-S	5	4.96 / 4.92	5.38	6.22	5.5	20.5	14	12	20
CLM-6-MBPx-xx-S	6	5.96 / 5.92	7.06	6.99	5.5	20.5	14	12	20
CLM-8-MBPx-xx-S	8	7.96 / 7.92	9.42	8	5.5	23.5	16.5	12	22.5
CLM-10-MBPx-xx-S	10	9.96 / 9.92	11.91	8.89	7	25	16.5	15	25.5
CLM-12-MBPx-xx-S	12	11.96 / 11.92	14.40	11.30	10	30.5	20.5	19	33.5
CLM-16-MBPx-xx-S	16	15.96 / 15.92	19	14.35	12.5	39.5	25.5	23.5	39.5