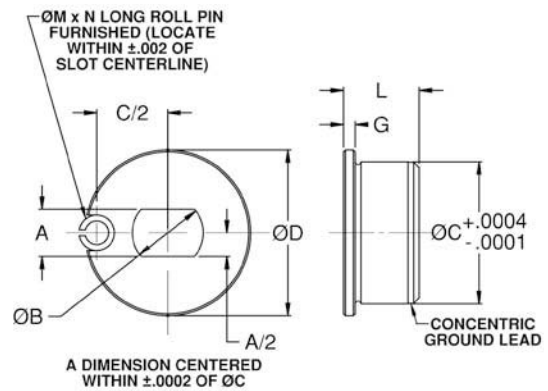
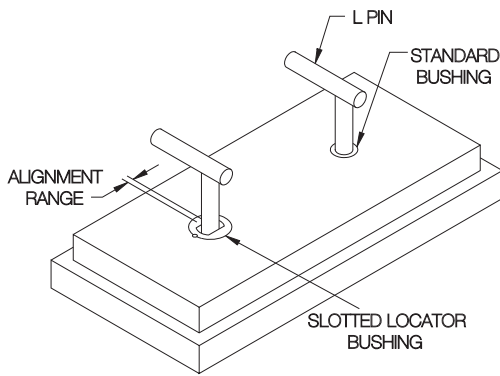


# HEADED SLOTTED LOCATOR BUSHINGS

STEEL: TOOL STEEL, HEAT TREATED RC 58-62, BLACK OXIDE FINISH  
 STAINLESS STEEL: 440C STAINLESS STEEL, HEAT TREATED RC 55-60, PASSIVATED



Slotted Locator Bushings can be used with many types of alignment pins and locating pins to align two holes without binding. Precision bushing with a tight tolerance in one direction and full relief in the perpendicular direction. This headed version provides more resistance to axial loads. The head can be left exposed, or recessed by counterboring the installation hole. Available for pin diameters from 3/16 to 1/2" diameter. Optionally available in hardened 440C stainless steel. Made in USA.



## STEEL (INCH)

PART NO.	PIN DIA	A	B DIA	C DIA	D DIA	G	L	M DIA	N
CL-3-HSLB	3/16	.1876/.1882	.312	.7500	.875	1/16	.40	3/16	3/8
CL-4-HSLB	1/4	.2501/.2507	.375						
CL-4A-HSLB									
CL-5-HSLB	5/16	.3126/.3132	.437						
CL-6-HSLB	3/8	.3751/.3757	.500						
CL-8-HSLB	1/2	.5001/.5007	.625	1.0000	1.125		.90		
CL-8B-HSLB									

## STAINLESS STEEL (INCH)

PART NO.	PIN DIA	A	B DIA	C DIA	D DIA	G	L	M DIA	N
CL-3-HSLB-S	3/16	.1876/.1882	.312	.7500	.875	1/16	.40	3/16	3/8
CL-4-HSLB-S	1/4	.2501/.2507	.375						
CL-4A-HSLB-S									
CL-5-HSLB-S	5/16	.3126/.3132	.437						
CL-6-HSLB-S	3/8	.3751/.3757	.500						
CL-8-HSLB-S	1/2	.5001/.5007	.625	1.0000	1.125		.90		
CL-8B-HSLB-S									