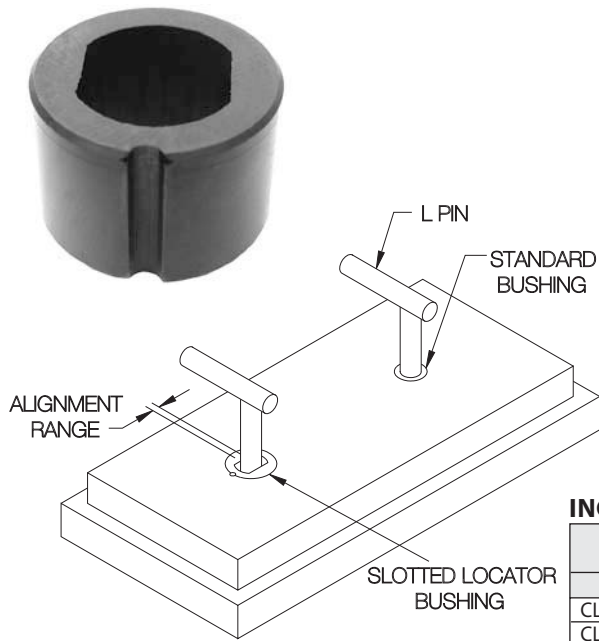
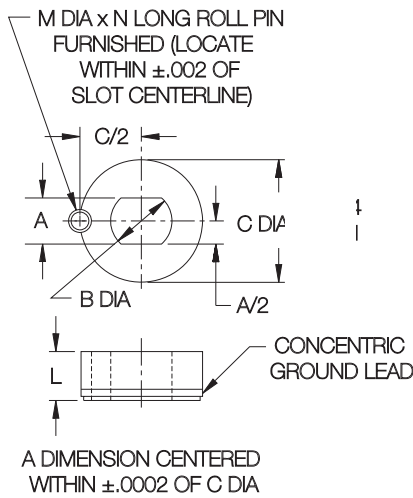


SLOTTED LOCATOR BUSHINGS

STEEL: TOOL STEEL, HEAT TREATED RC 58-62, BLACK OXIDE FINISH
 STAINLESS: 440C STAINLESS STEEL, HEAT TREATED RC 57-69, PASSIVATED



Use with L Pins, T Pins, Shoulder Pins, or Carr Lock® Clamps to align two holes without binding. Precision bushing with a tight tolerance in one direction and full relief in the perpendicular direction. Available for 1/8 through 1" diameter pins (5mm-25mm in metric sizes). To install, first drill and ream hole for roll pin (furnished), then bore large bushing hole for .0003-.0005 press fit. Press in bushing and roll pin simultaneously for accurate orientation. **Patent no. 3,381,554.**



INCH

PART NO.		PIN DIA	A	B DIA	C DIA +.0004/+.0001	L	M DIA	N
STEEL	STAINLESS							
CL-2-SLLB	—	1/8	.1251/.1257	.250	.7500	.40	3/16	3/8
CL-3-SLLB-.1285	—	#30	.1286/.1292	.312	.7500	.40		
CL-3-SLLB-.1562	—	5/32	.1563/.1569	.312	.7500	.40		
CL-3-SLLB	CL-3-SLLB-S	3/16	.1876/.1882	.312	.7500	.40		
CL-4-SLLB-.1910	—	#11	.1911/.1917	.312	.7500	.40		
CL-4-SLLB-.1935	—	#10	.1936/.1942	.312	.7500	.40		
CL-4-SLLB-.1960	—	#9	.1961/.1967	.312	.7500	.40		
CL-4-SLLB-.2188	—	7/32	.2189/.2195	.312	.7500	.40		
CL-4-SLLB	CL-4-SLLB-S	1/4	.2501/.2507	.375	.7500	.40		
CL-4A-SLLB	—				1.0000	.40		
CL-5-SLLB-.2570	—	F	.2571/.2577	.375	1.0000	.40		
CL-5-SLLB-.2812	—	9/32	.2813/.2819	.437	1.0000	.40		
CL-5-SLLB	CL-5-SLLB-S	5/16	.3126/.3132	.437	1.0000	.40		
CL-6-SLLB	CL-6-SLLB-S	3/8	.3751/.3757	.500				
CL-8A-SLLB	CL-8A-SLLB-S	1/2	.5001/.5007	.625	1.0000	.40		
CL-8-SLLB	—				.90			
CL-10-SLLB	CL-10-SLLB-S	5/8	.6251/.6257	.750	1.2500	.90		
CL-12-SLLB	CL-12-SLLB-S	3/4	.7501/.7510	.812	1.5000	.98		
CL-14-SLLB	—	7/8	.8751/.8760	1.000	1.5000	.98		
CL-16-SLLB	—	1	1.0001/1.0010	1.062	1.5000	.98		

METRIC

PART NO.	Steel	Stainless Steel	PIN DIA (mm)	A (mm)	B DIA (mm)	C DIA +.010/+.002 (mm)	L (mm)	M DIA (mm)	N (mm)
CLM-5-SLLB	—	—	5	5.003 / 5.028	8	20	9	5	8
CLM-6-SLLB	—	CLM-6-SLLB-S	6	6.003 / 6.028	9				
CLM-8-SLLB	—	CLM-8-SLLB-S	8	8.003 / 8.028	11				
CLM-10-SLLB	—	CLM-10-SLLB-S	10	10.003 / 10.028	13				
CLM-12-SLLB	—	CLM-12-SLLB-S	12	12.003 / 12.028	15				
CLM-16-SLLB	—	CLM-16-SLLB-S	16	16.003 / 16.028	18				
CLM-20-SLLB	—	CLM-20-SLLB-S	20	20.003 / 20.028	22	36	19		
CLM-25-SLLB	—	CLM-25-SLLB-S	25	25.003 / 25.028	27	40			

CARBIDE (INCH)

PART NO.	PIN DIA	A	B DIA	C DIA	L	M DIA	N
CL-4-CSLB	1/4	.2501/.2507	.375	.7500	.40	3/16	3/8
CL-5-CSLB	5/16	.3126/.3132	.437				
CL-6-CSLB	3/8	.3751/.3757	.500				
CL-8A-CSLB	1/2	.5001/.5007	.625				