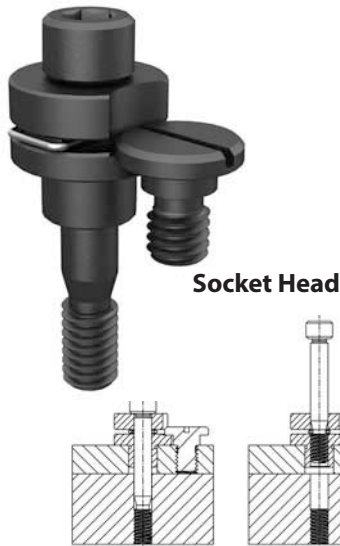


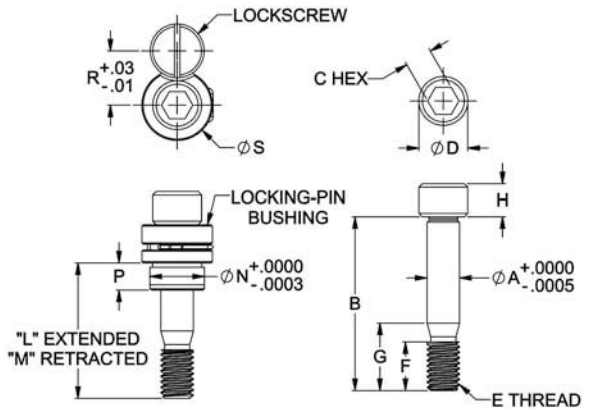
# CAPTIVE LOCATING SCREWS

SCREW: 1215 STEEL, CASE HARDENED, BLACK OXIDE FINISH  
 LOCKING-PIN BUSHING: 1144 STEEL, CASE HARDENED, BLACK OXIDE FINISH  
 RETAINER CLIP: SPRING STEEL

1



Captive Locating Screws can be used for locating and clamping, or for clamping only, by selecting the appropriate screw length. The locating screw's precision-ground body is positively retained in a locking bushing. In fully retracted position, the bushing's spring clip snaps into the body's radial groove. This holds the screw fully retracted by spring force and positively prevents removal. Spring pressure also holds the screw in intermediate positions, an advantage especially if the fixture is turned upside down.



## SOCKET HEAD – COMPLETE ASSEMBLY (INCH)

PART NO.	A DIA		B SCREW LENGTH	P BUSHING LENGTH UNDER HEAD	C	D DIA	E THREAD	F	G	H	L	M	N DIA		R	S DIA	LOCATING SCREW (INCLUDED)	BUSHING (INCLUDED)	LOCKSCREW (INCLUDED)	
	NOMINAL	ACTUAL											NOMINAL	ACTUAL						
CL-4-CLSA-1.25	1/4	.2490	1-1/4	Standard	.31	3/16	3/8	1/4-20	.40	.59	1/4	.81	.25	13/32	.4078	.62	13/16	CL-4-CLS-1.25	CL-4-LPB	LS-1
CL-42-CLSA-1.25				Long	.50													CL-4A-LPB		
CL-4-CLSA-1.75			1-3/4	Standard	.31													CL-4-CLS-1.75	CL-4-LPB	
CL-42-CLSA-1.75				Long	.50													CL-4A-LPB		
CL-5-CLSA-1.38	5/16	.3115	1-3/8	Standard	.31	1/4	15/32	5/16-18	.47	.65	5/16	1.31	.32	1/2	.5017	.62	13/16	CL-5-CLS-1.38	CL-5-LPB	LS-1
CL-52-CLSA-1.38				Medium	.37													CL-5A-LPB		
CL-53-CLSA-1.38			Long	.50	CL-5B-LPB															
CL-5-CLSA-1.75			Standard	.31	CL-5-LPB															
CL-52-CLSA-1.75			1-3/4	Medium	.37							CL-5-CLS-1.75	CL-5A-LPB							
CL-53-CLSA-1.75				Long	.50							CL-5B-LPB								
CL-5-CLSA-3.00			3	Standard	.31							CL-5-LPB								
CL-52-CLSA-3.00				Medium	.37							CL-5-CLS-3.00	CL-5A-LPB							
CL-53-CLSA-3.00	Long	.50	CL-5B-LPB																	
CL-6-CLSA-1.50	3/8	.3740	1-1/2	Standard	.31	5/16	9/16	3/8-16	.56	.75	3/8	1.06	.41	5/8	.6267	.62	13/16	CL-6-CLS-1.50	CL-6-LPB	LS-1
CL-62-CLSA-1.50				Long	.50													CL-6A-LPB		
CL-6-CLSA-1.75			1-3/4	Standard	.31													CL-6-CLS-1.75	CL-6-LPB	
CL-62-CLSA-1.75				Long	.50													CL-6A-LPB		
CL-6-CLSA-2.00			2	Standard	.31						CL-6-CLS-2.00	CL-6-LPB								
CL-62-CLSA-2.00				Long	.50						CL-6A-LPB									
CL-6-CLSA-3.00			3	Standard	.31						CL-6-LPB									
CL-62-CLSA-3.00				Long	.50						CL-6A-LPB									
CL-8-CLSA-1.50	1/2	.4990	1-1/2	Standard	.50	3/8	3/4	1/2-13	.75	.93	1/2	1.06	.60	3/4	.7518	.75	1-1/16	CL-8-CLS-1.50	CL-8-LPB	LS-1
CL-82-CLSA-1.50				Long	.75													CL-8A-LPB		
CL-8-CLSA-2.00			2	Standard	.50													CL-8-CLS-2.00	CL-8-LPB	
CL-82-CLSA-2.00				Long	.75													CL-8A-LPB		
CL-8-CLSA-3.00			3	Standard	.50						CL-8-LPB									
CL-82-CLSA-3.00				Long	.75						CL-8A-LPB									

## SOCKET HEAD – COMPLETE ASSEMBLY (METRIC)

CLM-6-CLSA-30	6mm	.2352	1.18	Standard	.31	5mm	.39	M6	.39	.56	.24	.71	.15	10mm	.3952	.63	.87	CLM-6-CLS-30	CLM-6-LPB	LSM-3
CLM-8-CLSA-35	8mm	.3140	1.38	Standard	.39	6mm	.51	M8	.47	.66	.31	.91	.29	13mm	.5135	.63	.87	CLM-8-CLS-35	CLM-8-LPB	LSM-3
CLM-8-CLSA-45			1.77									CLM-8-CLS-45								
CLM-8-CLSA-75			2.95									CLM-8-CLS-75								
CLM-10-CLSA-40	10mm	.3927	1.57	Standard	.47	8mm	.63	M10	.55	.76	.39	1.10	.45	16mm	.6316	.63	.87	CLM-10-CLS-40	CLM-10-LPB	LSM-3
CLM-10-CLSA-50			1.97									CLM-10-CLS-50								
CLM-10-CLSA-75			2.95									CLM-10-CLS-75								
CLM-12-CLSA-50	12mm	.4715	1.97	Standard	.71	10mm	.71	M12	.79	1.02	.47	1.50	.68	20mm	.7892	.71	1.02	CLM-12-CLS-50	CLM-12-LPB	LSM-3
CLM-12-CLSA-60			2.36									CLM-12-CLS-60								
CLM-12-CLSA-75			2.95									CLM-12-CLS-75								