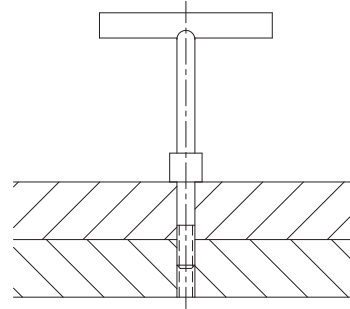


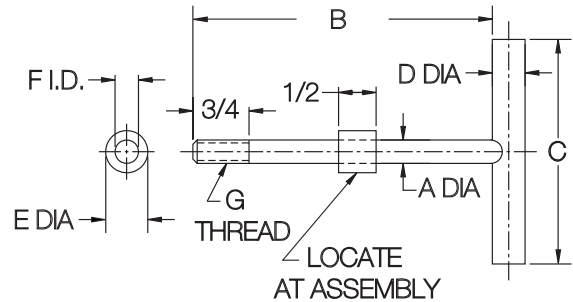
# CLAMPING PINS

PIN: 1215 STEEL, CASE HARDENED, BLACK OXIDE FINISH  
 BUSHING: 1215 STEEL, BLACK OXIDE FINISH

1



These threaded alignment pins can be used for locating and clamping, or clamping only, depending on extended screw length. The clamping bushing is furnished separate from the pin, and must be welded in place at the proper length to suit the application. Available in thread sizes from #10-32 to 1/2-13 (M6 to M12 in metric).



## INCH

PART NO.	A DIA		B ±.062	C	D DIA	E DIA +.002/- .000	F DIA	G
	NOMINAL	ACTUAL +.0/- .004						
CL-0-CP	#10	.193	3	1-1/2	1/4	3/8	.195	#10-24
CL-0A-CP				1-1/2	1/4	3/8	.195	#10-32
CL-1-CP	1/4	.250	4	2-1/2	3/8	1/2	.252	1/4-20
CL-2-CP	5/16	.312		3	7/16	9/16	.315	5/16-18
CL-3-CP	3/8	.375	4-1/2	3-1/2	1/2	5/8	.378	3/8-16
CL-4-CP	1/2	.500	5		5/8	3/4	.503	1/2-13

## METRIC

PART NO.	A DIA +0/- .10 (mm)	B ±1.6 (mm)	C (mm)	D DIA (mm)	E DIA +.050/- .000 (mm)	F DIA (mm)	G THREAD	THREAD PITCH (mm)
CLM-6-CP	6	102	63.5	9.5	12.5	6.05	M6	1
CLM-8-CP	8		76	11	14.5	8.05	M8	1.25
CLM-10-CP	10	114	89	12.5	16	10.05	M10	1.5
CLM-12-CP	12	127		16	19	12.05	M12	1.75