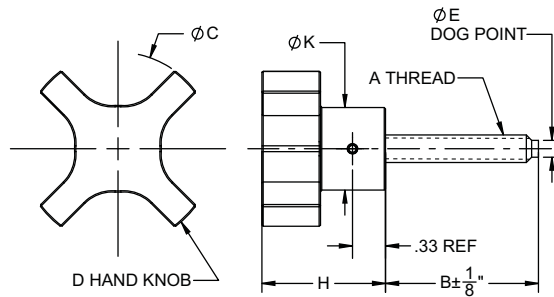


EXTRUDED HAND KNOB

HAND KNOB: EXTRUDED ALUMINUM, GREEN ANODIZE
SCREW: 1215 STEEL, ZINC PLATED CLEAR CHROMATE



Extruded, easy-to-grip hand knob with an integral steel clamping screw. Four-prong design provides a firm grip for applications requiring quick tightening and high torque. Made in U.S.A.

GREEN ANODIZE (INCH)

PART NO.	A THREAD	B	C DIA	D	E DIA	H	K DIA	
CL-1-HKE2T	1/4-20	1	1-3/4	CL-4T-HKE-20	.15	1-1/8	3/4	
CL-2-HKE2T		1-1/2						
CL-2A-HKE2T		2						
CL-2B-HKE2T		3						
CL-3A-HKE2T	5/16-18	1		CL-5T-HKE-20	.20			
CL-3-HKE2T		1-3/4						
CL-4-HKE2T		2-1/2						
CL-4A-HKE2T		3						
CL-5A-HKE4T	3/8-16	1	2	CL-6T-HKE-30	.25	1-3/8	13/16	
CL-5B-HKE4T		1-1/2						
CL-5-HKE4T		2						
CL-6-HKE4T		2-1/2						
CL-6A-HKE4T		3						
CL-7A-HKE4T		1/2-13						1
CL-7B-HKE4T	1-1/2							
CL-7C-HKE4T	2							
CL-7-HKE4T	2-1/2							
CL-8-HKE4T	3							
CL-9-HKE6T	5/8-11		1-3/4	2-1/2	CL-10T-HKE-40	.46	1-1/2	1
CL-10-HKE6T		3						
CL-12-HKE6T	3/4-10	3	CL-12T-HKE-40		.56			

GREEN ANODIZE (METRIC)

PART NO.	A THREAD	B (mm)	C DIA (mm)	D	E DIA (mm)	H (mm)	K DIA (mm)			
CLM-1-HKE2T	M6x1.0	25	44	CLM-6T-HKE-20	4.4	28	19			
CLM-2-HKE2T		40								
CLM-3A-HKE2T		25								
CLM-3-HKE2T		45								
CLM-4-HKE2T	M8x1.25	65		CLM-8T-HKE-20	5.9					
CLM-5A-HKE4T		25								
CLM-5B-HKE4T		40								
CLM-5-HKE4T		50								
CLM-6-HKE4T		65								
CLM-7A-HKE4T		M10x1.5	25			51	CLM-10T-HKE-30	6.9	35	21
CLM-7B-HKE4T	40									
CLM-7C-HKE4T	50									
CLM-7-HKE4T	65									
CLM-8-HKE4T	75									
CLM-9-HKE6T	M12x1.75		45	64	CLM-12T-HKE-30					
CLM-10-HKE6T		75								
CLM-12-HKE6T		M16x2.0	75			CLM-16T-HKE-40	11.9			
CLM-12-HKE6T			75					CLM-20T-HKE-40		