

HINGED BUSHING PLATES

BASE: 1018 STEEL, WEAR SURFACES HARD WELDED & GROUND, BLACK OXIDE FINISH

ARM: 1018 STEEL, WEAR SURFACES HARD WELDED & GROUND, BLACK OXIDE FINISH

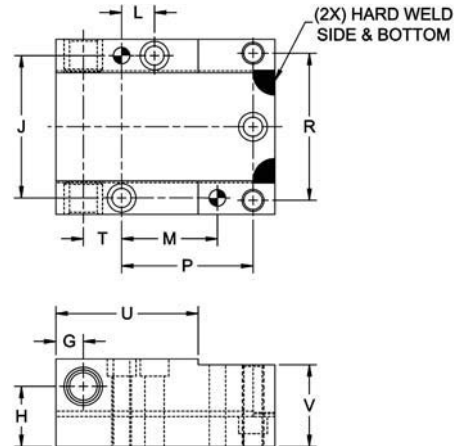
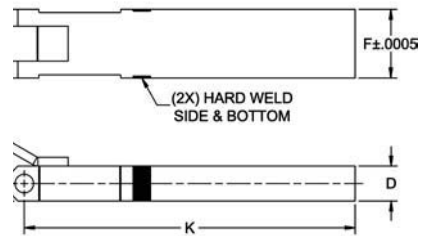
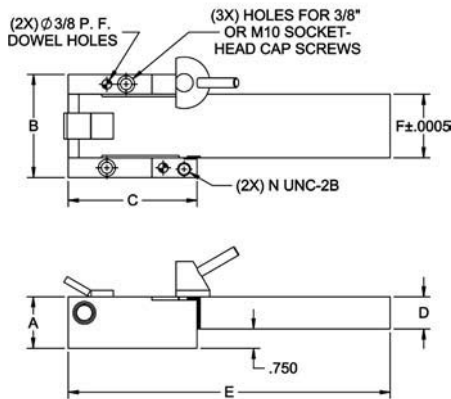
PIVOT PIN: 4130 STEEL, HEAT TREATED, BLACK OXIDE FINISH



Complete Assembly

Hinged Bushing Plates are precise, heavy-duty bushing-plate assemblies for large-scale production jigs. The swing-away arm is precision ground but left unhardened for installing drill bushings (wear surfaces are hard welded and ground). The arm swings open a full 120° for loading clearance. The mounting base is hardened and precisely ground to provide accurate location. The base includes liner bushings as bearings for the hardened pivot pin, and a half-turn latch screw. Hinged Bushing Plates are available in three sizes. Made in USA.

Arms can be ordered separately, to use as replacements or to switch tooling. The pivot pin can be easily removed by loosening the set-screw, allowing quick arm changeover.



COMPLETE ASSEMBLY

PART NO.	A	B	C	D	E	F	G	H	J	K	L	M	N	P	R	T	U	V
CL-1-HIBP	1-5/8	3	3	.750	7-1/2	1.4655	.500	1.125	2.250	7	.625	.938	5/16-18	1.438	2.250	.625	1.81	1.44
CL-2-HIBP	1-3/4	3-1/2	4	1.000	10	1.9655	.500	1.250	2.750	9-1/2	.625	1.500	3/8-16	2.250	2.750	.750	2.50	1.69
CL-3-HIBP	2	4	5	1.250	12-1/2	2.4655	.625	1.375	3.250	11-7/8	.750	2.188	1/2-13	3.000	3.360	.875	3.25	1.88

ARM

PART NO.	D	F	K
CL-1-HIBP-ARM	.750	1.4655	7
CL-2-HIBP-ARM	1.000	1.9655	9-1/2
CL-3-HIBP-ARM	1.250	2.4655	11-7/8

REPLACEMENT LATCH SCREW

REPLACEMENT LATCH SCREW	FOR ASSEMBLY PART NUMBER
CL-5041-PXLS	CL-1-HIBP
CL-5040-PXLS	CL-2-HIBP
CL-5039-PXLS	CL-3-HIBP